

Village Views

MAY 2018

SERVING THE COMMUNITIES OF ACTON BURNELL, PITCHFORD, FRODESLEY, RUCKLEY AND LANGLEY

WELCOME TO THE EARLY SUMMER EDITION OF VILLAGE VIEWS

With winter now behind us, and summer on the horizon, it is time to get out and about to enjoy everything that our part of beautiful Shropshire has to offer. That might be a stroll along the lanes, or a more strenuous hike along the Long Mynd; a cream tea at one of the local stately homes or a pint at Pitchford Pub Night. However you choose to spend your summer, don't forget to make a

date in your diary for the highlight of the season - the Acton Burnell Fete and the famous Burnell Bash on 9th June.

Please send all items to:
villageviews@hotmail.com, or call
Chris Harrison on **01694 731120**, or
speak to one of the members of the
Village Views committee (Karen Fisher,
John Glover or Gilly Turner)

Parish Meeting

The Annual Parish Meeting will be taking place on 8th May 2018 at Pitchford Village Hall. Arrival from 7pm for a start at 7.30pm. Refreshments will be available.

This meeting is open to residents of Acton Burnell, Pitchford, Frodesley, Ruckley and Langley. It is an opportunity to put forward any new ideas and initiatives, questions or concerns you may have about your community and to hear about the work of your Local Council.

Peter Nutting, Shropshire Council Leader, will be attending to speak about future plans at the County Council and our Community Liaison Officer, Lisa Bedford, will be talking us through the process of creating a new Community Led Plan for our combined Parishes.

If you have a particular issue that you wish to discuss or if you wish to talk about your local community group, or community activity then contact one of your Parish Councillors or the Parish Clerk. The Agenda must be published on Parish Notice Boards and the Parish website before the meeting, so do not delay - please contact the Parish Clerk as soon as possible.

You can message, text or call the Clerk on **07768 437032**, or email **clerk@actonburnellparishcouncil.co.uk**
Or find your Councillor's contact details on the website:
www.actonburnellparishcouncil.org.uk

DEFIBRILLATOR NOW IN PLACE IN FRODESLEY

A defibrillator has now been installed in the telephone box at Frodesley for use by members of the public. This is the same design as the defibrillator recently installed in Acton Burnell, and can be used by anyone- including those of us without any training or medical knowledge. The device includes visual and audio instructions giving you clear information on what you need to do.

Defibrillators will also shortly be installed in Pitchford and Ruckley and Langley.

Have Your Say....

The Parish Plan provides a snapshot of our community today, and helps shape how it develops in the future. The last Parish Plan was completed 5 years ago, and is currently being reviewed.

If you would like to be involved in updating the Parish Plan please contact the Parish Council Clerk, Elizabeth Wicks, on **07768 437032** or email **clerk@actonburnellparishcouncil.co.uk** or speak to your local Parish Councillor.



Books on your doorstep

The mobile library is a wonderful resource that visits Acton Burnell once a fortnight, on alternate Thursdays. The library van can be found opposite the village shop (or very nearby - depending on parking!) from 10.35am to 10.50am. The van carries a wide variety of books for all ages, including baby board books, children's stories and teenage novels, as well as the usual selection of fiction and non-fiction books for adults. A selection of CD audiobooks is also available. Books and audiobooks can be requested at a cost of 70p per item (free for children and for concessionary members).

If you already have a library card, then you can start using the mobile library right away. If you don't yet have a library card, then the mobile library can issue you with one (you will need to provide proof of your address).

The mobile library will be in Acton Burnell on 3rd, 17th and 31st May, and on 14th and 28th June.



The closing date for contributions to the next edition will be 20th July 2018.

Would you like to advertise your business in Village Views? Contact us on **villageviews@hotmail.com** for more information.

What's on

6th May

Bluebell Walk with Keith Pybus at Shropshire Hills Discovery Centre, Craven Arms. Costing £5 per adult, this is a gentle 3.5 mile walk along mainly field paths and quiet lanes, to enjoy spotting bluebells in full flower. 10.30am start.

12th May

The Church Stretton 11th Annual Duck Race Day takes place from 11.00am to 4.00pm. Come along to the Chalet Pavilion to take part (cost 50p per race), and help to raise money for Stretton Climate Care, a local charity committed to raising awareness of climate change.

12th May

Behind Closed Doors – a dramatic, costumed evening tour of Attingham Hall – takes place on at 4.45pm. Booking in advance is essential. Please call 01743 708165 or book on-line at nationaltrust.org.uk. There is a charge of £8.00 per person for this event. There will be a second chance to enjoy this tour on 16th June.

13th May

Longnor School Duck Race at Bridge Farm, Leebotwood (opposite the farm shop). BBQ and refreshments from 12 noon, and the first race at 1.15pm. Please bring your own chairs. Prizes for the winning ducks!

14th May

Murder on the Orient Express showing at Church Stretton School (please note that this film is classified as 12A). Tickets £4.00 for adults and £2.00 for children. Film starts at 7.30pm. Contact 01694 724330 for more information.

18th May

Pub Night at Pitchford Village Hall. Doors open at 7.30pm and the Nippy Chippy will be in attendance from around 8.00pm.

20th May

Classic Vehicle Day at Eaton Manor, Eaton-under-Heywood, Church Stretton in aid of Macmillan Cancer Care. Classic cars and a wealth of other attractions, including model railways and scalextric racing. Gates open at 11.00am. More information at www.eatonmanor.co.uk.

26th May

Help to build a minibeast city at the **Bug City day** at Shropshire Hills Discovery Centre, Craven Arms. £2.50 per child. Wellies and outdoor clothing needed for this fun activity starting at 11.00am! More information at www.shropshirehillsdiscoverycentre.co.uk

3rd June

Shrewsbury River Festival – free family fun in The Quarry and along the river. Includes raft racing, duck and boat races, coracles, fancy dress competitions and live entertainment.

4th June

The Post showing at Church Stretton School. Tickets £4.00 for adults and £2.00 for children. Film starts at 7.30pm. Contact 01694 724330 for more information.

9th June

The Acton Burnell Fete takes place today at St Mary's Church, Acton Burnell, followed by the famous Burnell Bash.

12th June

A live performance of **Swan Lake** by The Royal Ballet will be screened at Church Stretton School at 7.15pm. Tickets £12.00 for adults, and £6.00 for children. The Place Restaurant will also be offering a pre-theatre two course meal with wine or a soft drink for £15.00 per head. To book tickets for the performance and to reserve a table at the restaurant, please call 01694 722209.

15th June

Indian Takeaway and Pub Night at Pitchford Village Hall. First pint pulled at 7.30pm, and tonight featuring the opportunity to have an Indian meal delivered from Mahim's Takeaway in Bayston Hill. See 'Village Hall News' for more information!

20th June

Spend a night under the stars and celebrate the shortest night of the year at the **Solstice Sleepout** on the Long Mynd. Bring along a small tent, sleeping bag, torch, food and drink - the National Trust Cardingmill Valley team will provide a warming fire and a longdrop loo! For more information and to book a place, call 03442 491895.

1st July

Longnor School Summer Fete, 2.0pm to 5.00pm. Free entry for everyone - enjoy stalls, games, a bouncy castle, BBQ, bar and much more.

7th & 8th July

Shrewsbury Dragon Boat Festival takes to the River Severn. This is a fun annual event to raise money for the Severn Hospice and features teams from a wide range of businesses, clubs and organisations.

19th July

Longnorfest comes to Longnor School. Starting at 6.00pm and carrying on until late in the evening, with live entertainment and an open mic session for all the family. Entry £5 (under 16s free) to include a commemorative glass. BBQ, tuck and pre-loved uniforms for sale.

20th July

Pub Night at Pitchford Village Hall - bar open from 7.30pm, and the Nippy Chippy in attendance from around 8.00pm.

27th July

Join the Pantaloons theatre company on for an outdoor production of **The Importance of Being Earnest**, performed against the backdrop of Attingham Hall. Starting at 7.00pm, this performance will go ahead no matter what the weather! Bring along a picnic, something to sit on, and waterproofs if the weather looks doubtful. Tickets £15.00 for adults and £10.00 for children (over 5's only, please). Call 03442 491895 to book your tickets.

28th July

Start of the **Church Stretton Arts Festival** kicks off with a performance of the London Mozart Players at Concord College. The Festival will run until 12th August, and will include music, comedy, drama and art. For more information and to book tickets for any event, please go to www.strettonfestival.org.uk

ACTON BURNELL FETE

Saturday 9th June 2018

Starts at 2.30pm by the Church

Lots of stalls and sideshows, teas and ice creams

This will be followed by the popular **BURNELL BASH**, beginning at 6.30pm.

There will be food and a bar. Tickets £10 for adults, £5 for children (under 5's are free), available from the Acton Burnell Shop, or from Jill Faulkner at **01694 731363**

Volunteers to help very welcome!

Any ideas for stalls and sideshows, or if you know a singer or band who could perform at the Bash for a nominal fee, please contact Jill Faulkner.

Don't forget – Father's Day is on 17th June!

Unlike Mothering Sunday, which dates back several centuries, beginning as a day for people to attend a service at their 'mother' church, coupled with a visit to their family home to see their mother, Father's Day is a relatively recent arrival in the UK.

It originated in the USA around 1910, although exactly who came up with the idea has been the subject of much discussion. Some believe that a lady called Sonora Smart Dodd was inspired to start celebrating Father's Day as a tribute to her own father who was a veteran of the American Civil War, and who had raised his six children as a single parent.

The alternative account is that the first Father's Day was organised by Grace Golden Clayton, an orphan who wanted to mark the mining disaster of 1907 in Monongah, West Virginia, which killed 362 men, and led to more than 1,000 children being left without a father.

Although the day is officially recognised in the USA, it is a more low-key affair in the UK, and has only been regularly celebrated since the 1970s. Some may say it is just another money-making scheme designed to sell greetings cards, compilation CDs, beer and socks, but nonetheless, we would like to take this opportunity to remember all the great Dads in our own families and in our wider community, and to wish them....

Happy Father's Day!

New GP Extended Opening Hours

Much Wenlock and The Beeches medical practices are included among 37 medical practices across Shropshire and Stafford which have teamed up to offer extended surgery hours for their patients, offering appointments at one of the group surgeries (please be aware that you may have to travel to another surgery for your appointment).

Appointments can be booked (subject to availability) from 6am to 8pm on weekdays and from 9am to 1pm on Saturdays. If you are registered at one of these medical practices, and need to request one of these appointments, please telephone **0333 222 6649**.

Free NHS Health Checks

NHS Health Checks are offered to all eligible patients aged between 40 and 74 once every five years.

The check is to assess your risk of developing heart disease, stroke, kidney disease or diabetes. If there are any warning signs, then together we can do something about it. The check should take about 30 minutes and is based on straightforward questions and measurements such as age, sex, family history, height, weight and blood pressure. There will also be simple blood tests to measure your cholesterol and if required glucose levels.

If you are eligible for a health check you will receive a letter from your medical practice inviting you to attend an appointment.

Much Wenlock and Cressage Medical Practice May Bank Holiday Closures

The surgeries will be closed on Monday 7th May and Monday 28th May. If you need urgent health care on these dates, contact Shropdoc on **0333 222 6655**



Church News

St. Mary's Acton Burnell Community and Heritage Project

As reported in the recently published directory, we are currently looking at a scheme to adapt St. Mary's Church Acton Burnell to provide toilet and refreshment facilities as well as celebrate the heritage of the church, the village and the locality. The sketch plans have received the support of the Church authorities who have encouraged us to begin the development phase of the project which will include commissioning our architect to draw up some more 'in depth' drawings as well as engaging a Quantity Surveyor to provide a budget estimate figure for us to work round, and engaging mechanical reports on heating and lighting within the church. The development stage will be completed as soon as practically possible, but we aim to complete it within the next 12 months. As part of this we will hope to host another community consultation which will give information as well as invite comments on the plans. Also within that timeframe we will hope to put

the more detailed plans to the church authorities for further advice and support as well as consulting the statutory consultation bodies which will include English Heritage and the Victorian Society.

RIDE and STRIDE

We are very grateful to the Shropshire Historic Churches Trust who have granted us a generous grant towards the cost of all that is involved in this development stage. The trust runs an annual cycle ride/walk around local churches in September. It is called Ride and Stride and is on 8th September (please see www.rideandstrideuk.org/counties/shropshire/). It is a sponsored event and half of the money raised goes to the Churches Trust and half goes to the church. If anyone is interested in taking part on behalf of St. Mary's Church, please get in touch (Geoff Garrett, **01743 872251** or revgeoff@live.co.uk). If you want to take part on behalf of Frodesley or Pitchford churches, please also let me know.

Rev. Geoff Garrett

What's that bug?

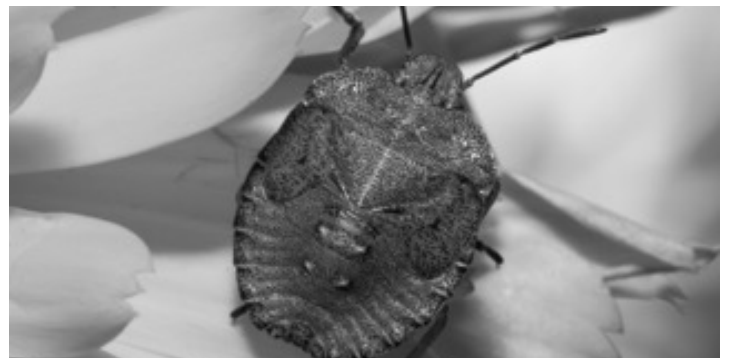
COMMON NAME:

Common Green Shieldbug (nymph pictured)

LATIN NAME:

Palomena prasina

Adults appear in May; Nymphs appear in June



What are common green shieldbugs?

Common Green Shieldbugs (*Palomena prasina*) (Hemiptera: Pentatomidae) are true bugs. They are also commonly known as Stink bugs due to chemical volatiles (odours) that are released when threatened.

So they are the same as stink bugs. Why do they make a stink?

The odours signal to others that there is danger around. Shieldbugs can also release chemical volatiles when attempting to find a mate.

These are called shieldbugs - is there a difference between a bug and an insect?

Often insects are loosely called bugs, but what you might be seeing is not a bug at all. Bugs undergo incomplete metamorphosis, meaning that young stages (nymphs) look quite similar to the adults (imago).

When might we see shieldbugs in our gardens?

The adults of *P. prasina* emerge from dormancy (diapause) in May and start feeding. They enjoy sucking on plant sap using specialized mouthparts. Mating starts in June in a back-back position. During the Spring and Summer months their colouration is bright green. Although, they turn brownish before overwintering. Nymphs start appearing in June and moult between the five nymphal stages. Like the adults, they enjoy to harmlessly feed on a variety of trees and shrubs. Their colouration darkens with later stages in preparation for diapause in autumn. *P. prasina* is commonly found in the UK, with the exception of Scotland.

Have a go at identifying your bugs at www.britishbugs.org.uk

Ana Natalio and Nick Antill

LONGNOR C.E. PRIMARY SCHOOL NURSERY

OPENING SEPTEMBER 2018

Longnor School will be offering provision for 3 and 4 year olds:

- Teaching by an experienced teacher
- Forest School and outdoor learning in the school's beautiful grounds
- Learning through play with a creative curriculum
- Before and after school clubs
- Delicious meals cooked on site
- Strong links with the community
- A welcome for the whole family

For more information, or to register interest, please contact Longnor School on **01743 718493** or email admin@longnorschool.co.uk

GODOLPHIN EDWARDS CHARITY

The Godolphin Edwards Charity continues to welcome applications for financial help with a wide range of needs from people who live in the parishes of Frodesley, Pitchford and Acton Burnell. The charity trustees comprise representatives from the three parishes, and will next meet on Thursday 17th May 2018 (urgent requests can be dealt with if received before or between meetings).

Applications or enquiries in writing can be made to the secretary/treasurer Michael McElhinney at Arbore House, Acton Burnell, Shrewsbury, SY5 7HR.

Contributors wanted!

Do you have a passion for birdwatching or wildlife? Green fingers? Love history or folklore? Are you a whizz in the kitchen or a photography fan?

We would love to hear from anyone who has an interest they would like to share with our readers. Perhaps you could provide seasonal gardening or cooking tips and hints, or let us know what birds and wildflowers to look out for each month. Maybe you have a knowledge of local history or can remember the stories your grandparents told you about local myths and legends. Or you may have a more practical turn of mind and some useful skills to share.

If you would like to become a Village Views contributor, email villageviews@hotmail.com with your ideas, or call **01694 731120**. In addition, if there is something you would like to see covered in the newsletter, then let us know and we will see what we can do!

THE British WI Movement

The first WI was started in the vast prairies of Canada when a farmer's wife, Adelaide Hoodless, had a stillborn child which she lost, she thought, through her own ignorance. From there, she started a social movement among isolated farming communities among farmers' wives giving support to each other and sharing practical skills of a domestic nature, but also improving their general education.

Madge Watt, a Canadian, settled in this country and brought the idea with her, setting up the first one in Anglesey in 1915. This was a time when men had gone to war, women were badly educated and socially isolated, they did not have any voting rights. Many suffered the privations of having no electricity or piped water. Women were made of stern stuff in those days, and because of that helped bring women's rights to the fore, being in full support of women's suffrage and in ensuing years being instrumental in many acts of parliament to further the cause of women and their families.

National Federation

Today, this still goes on, albeit on a broader basis, in our campaigns which are spearheaded by resolutions passed at our Annual National Conference and put forward by the general membership. In past years we have lobbied governments on such things as plastic soup, the loneliness of the elderly, women's mental health in prisons, the plight of the honeybee, food waste and many many more.

The WI is by far the largest women's voluntary organisation in the country with 220,000 members in around 6,300 WI's and the National Federation is administered from the New Kings Road, London. An annual draw is set up to help fund this with high range prizes.

Our Own Educational Establishment

They also manage our own educational college – Denman – which offers a range of courses with first class tutors. These can take the form of day schools, taster days and residential courses lasting 2 3 or 4 days. The facilities and cuisine at Denman is of the highest quality and it is situated in beautiful grounds. There are specially adapted bedrooms equipped for the disabled and their carers, and each bedroom is beautifully decorated under the care of each federation.

Should you wish to learn online, we have our own MOODLE website. To access this, you have to ask your Membership Communication Officer (in our case Bridget Thurgood) to register you in, and henceforward you will be able to access workshops on cooking, crafts, lots of other useful information and a full list of Denman courses. You may rest assured that your details will be kept private.

Shropshire Federation

Our Federation office is based at 9 Park Plaza, Battlefield Enterprise Park, Shrewsbury, SY1 3AF, Telephone No. 01743 461646. The federation employ admin staff but everyone else is a volunteer. Federation Secretary is Jan Morgan and deputy Debbie Clapperton.

County Office is responsible for disseminating information via the County News which members receive at our monthly meetings. These are a communication tool as to what is going on in the federation with an invitation to workshops, trips and events, competitions, and special events. We have our own marquee at Shrewsbury Flower Show where Institutes compete in showing crafts, cookery, photography and flower arranging. We also have an annual darts competition, photography competition for pictures for the following year's calendar and annual trivia quiz. Various sports and health activities have been tried in the past like curling, bowls, Nordic walking, and canoeing down the river. There are plans to join the walking netball group in the West Midlands.

Our SFWI Annual Meeting is usually held each year in April at Theatre Severn, when a delegate is chosen from each institute to attend and pass on any pertinent information back to their WI. This is usually a very enjoyable affair when we have particularly good speakers (i.e. this year Giles Brandreth, the Mayor and a representative from Blood Bikes). There is also a chance to win in our Claremont Club Draw – first prize £100 – or put your name in the hat to be chosen for a bursary at Denman (mentioned before). Craft and other stalls will be selling goods outside the venue.

WI Advisors are on hand to help WI's sort out any problems or to give advice on anything to do with their Institute. If needed, they can be contacted via County Office. Our WIA is Margaret Leverton. There are also members who have taken their judges certificate

who we have access to if we hold a competition.

Our Own WI. We elect our own president and committee annually, the number of members on committee determined by the size of our membership. They organise at least eleven meetings annually and often there are extra events arranged between meetings. Decisions about their own meetings are decided by us and we can make and change byelaws. Every WI has an annual Hand Book which gives detailed information about running a WI eg roles of officers, meeting agenda, programme planning. WI's can raise funds for themselves or for local charities which are in line with their objectives. The Shropshire Federation have chosen their own project to support which is Associated Country Women of the World when we occasionally collect "pennies for friendship"

Groups

There are 19 Groups in Shropshire and we belong the East Shrewsbury Group convened by Sally Joyner of Frankwell WI. The other WI's in our group are Sundorne, Withington, Frankwell, and Cressage. Each group holds events and outings open to all members of the group. Being in a group is a good way to socialise and extend friendships. With no need to fundraise, this can enable members to have a special more expensive speaker or a more ambitious coach outing.

The Future

From our inauguration in 1915, the WI still continues to evolve with new WI's being set up in workplaces, prisons, universities and hospitals. Younger members will want something different but we still focus on what really matters – giving women a voice, and our commitment towards living a better life for ourselves and each other. Next year promises to be very special as it is our Centenary.

We hope that you, after reading this, will be similarly inspired and come and join our small but very friendly Institute. You are invited to attend twice as a visitor before committing yourself to full membership. Contact Beth Davies at beth.davies1@hotmail.com, or ring **01694 731657**.

Beth Davies

CARING FOR GOD'S ACRE

This is a charity dedicated to conserving and celebrating burial grounds. It encourages a holistic approach to the management of grave yards which contain a fantastic wealth of biodiversity and history. As well as being a place for people, burial grounds can also be a haven for wildlife. They are refuges for wildlife and stepping stones of habitat within our increasingly nature deprived landscape. The charity is working towards protecting wildlife, preserving heritage and involving people.

Our local churchyards have a succession of flowers in the spring such as snowdrops, daffodils, wood anemones, primroses and cowslips. Cowslips were formerly common in our meadows before the use of herbicides. However to maintain these species we need to treat our church yard grass like a meadow and cut the grass when the plants have had time to prepare for the following year. In the case of daffodils this is a minimum of six weeks. Therefore, although we cut grass paths to give access in the spring we leave the

flower rich areas till later. Cutting the long grass is often a community activity harking back to the hay making of old.

Ten years ago, Martin and Clare Nicholson began a Cemetery project recording the graves of people who lived to over 100. Since then they and their family have visited over a million graves and recorded many unusual inscriptions. The website containing over 1000 pages is at www.grave-mistakes.info

Ron Repath

CENTENARY CELEBRATIONS OF THE END OF THE FIRST WORLD WAR

As many of you will know, 11th November 2018 marks the date 100 years on from the Armistice that largely ended fighting in WWI.

As a side-note – and as a piece of historical trivia- the war didn't formally finish until 28th June 1919 when the Treaty of Versailles was finally signed, which is why some war memorials commemorating the dead from that war show '1914-1918' and others '1914-1919'.

Acton Burnell Group Parish Council propose to mark the centenary in a variety of ways:

BATTLE'S OVER – A NATION'S TRIBUTE AND WWI BEACONS OF LIGHT

First, by joining in with a nationwide festival of commemoration and remembrance during which a chain of 1,000 beacons will be lit throughout the United Kingdom, Channel Islands, Isle of Man and UK Overseas Territories at 1900 on Sunday 11 November 2018 – a century after the guns fell silent.

Our beacon, in the form of a large bonfire, will be sited high on Acton Burnell Hill and all residents of the five constituent parishes of the Group ie Acton Burnell, Pitchford, Frodesley, Langley and Ruckley, will be invited to attend. Planning is in the early stages, but it is hoped to have food and drink available.

SERVICE OF REMEMBRANCE

In addition, a service of thanks in tribute to the men and women from the local parishes who fought and, in many cases, died in the war will be held at St Mary's Church, Acton Burnell at 1730 on 11 November. This will allow all parishioners to pay their respects to those who served in WW1 and then move up the hill to attend the beacon lighting.

More details of this service will be published nearer the date.

ROYAL BRITISH LEGION 'SILENT SOLDIER' CAMPAIGN

Finally, the Royal British Legion has launched a 'Silent Soldier' campaign remembering those who lost life and limb all those years ago. The Silent Soldier is a silhouette of a First World War 'Tommy' and it is anticipated that these will be displayed nationwide as a powerful reminder of the sacrifices made by service personnel of Britain and the Empire during WW1.

The Silent Soldier is made of weather-proof black dibond, costs £100 (plus a donation) and comes as a simple near life-size figure with a base panel reading "1914-1918 Lest we Forget". The figure is 'silent' in remembrance of those who lost their lives and 'silent' as a sign of respect for those who returned to their homes having suffered life-changing physical and emotional injury.

Acton Burnell Group Parish Council would like to erect one of these figures at a central point in the parish and would welcome comments on this plan, which should be made to either the Parish Clerk or your local Parish Councillor.

Similarly, if parishioners would like to make a contribution to the cost of the Silent Soldier or make a donation to the RBL, they should contact the same people.

Further details of all these events and commemorations, together with an update on progress, will be published in the next edition of Village Views.



A NATION'S TRIBUTE

11TH NOVEMBER 2018

100 YEARS OF REMEMBRANCE

Local Strolls: The Stockbatch Circular

The second in a series of local ambles from Pitchford resident and ex-geography teacher John Glover

If you want a nice afternoon 'post lunch' stroll in lovely countryside at a pleasant gradient and with a few interesting sights along the way and where you are unlikely to meet anyone else, then this is it. But beware, it comes with a warning!

The whole round is about 3¼ miles and will take you about an hour to an hour and a half. Although the best place to start and finish is at the Village Hall in Pitchford, being a circular walk, there are equally good places to aim from, mainly Acton Burnell and from the Acton Burnell – Frodesley road as indicated on the map.

Ok. This is a cracking stroll, but there are a couple of obstacles on the way and the first will hit you within two minutes of your start. Setting out from the car park at the Village Hall in Pitchford, you turn right and then left just beyond the hall where there is a Public Bridleway sign. A short track takes you to a gate, the other side of which you will see what has been dubbed the 'Pitchford Lake'. The gate opens from the right which means that in all months of the year (unless we are a few weeks into a summer drought or in the middle of a deep winter freeze) you will have to step right into the large flood that permanently sits at the junction of our path and that to Pitchford Farm. It is deep and the mud under the water adds to its depth. There is not normally any dry ground on either side of the flood but the best route is to the left - although you may need to hang off the branches on the hedge and run the significant risk of losing your shoes in the mud. In short, wear wellies and understand your dog will need a full hose-down when you get back!



Attempting the 'Pitchford Lake'

Once you have crossed the mire then the track heads straight on in front of you and after about 50 yards or metres you pass through a gate and into a pasture with a brilliant deeply incised river valley to your right. This is a tributary of Row Brook which leads into the Severn. Back at the end of the ice age some 13,000 years ago,

the area was smeared in glacial moraine which covered the local rock. Meltwater and rainfall then formed rivers on this gooey clay. Some miles away, the Severn had cut vertically down through the rock to a lower level than here in Burnell Ward and streams, such as ours to the right, then cut down through the moraine and rock to get to the same level as the Severn flowed. This process is called 'rejuvenation' where the river behaves as a mountain stream where the dominant direction of erosion was vertical. Once it reached this 'base level' – the level of the River Severn it flows into, it started to behave as a lowland river and eroded sideways, cutting the small floodplain you see in the widening valley floor and the channel also started to form the meanders which you can see today. This was also helped by the land all around bouncing upwards in a process called isostatic readjustment – the weight of the ice had gone from the area and like a mattress which you get up from in the morning, it will rise up and regain its original level, the river slicing into it as it rose up.

Moving on, you descend into the valley floor and pass through a gate and over a wide earth bridge before climbing up the other side of the valley. The obvious route to the left is a bit muddy, uneven and overgrown and you are best keeping to the right of the bushes with the wood to your right. You soon pop out on top and the track becomes clearer and takes you through another gate and on a farm track to Stockbatch.

On the right is a solar farm. Technology has advanced very significantly in recent years such that even in our cloudy skies, power can still be produced by solar panels and this is evidenced by the increasing numbers of these both in Shropshire and nationally.

Moving on along the farm track, you come to a point where the track turns sharp right after passing a field with the hedge to your

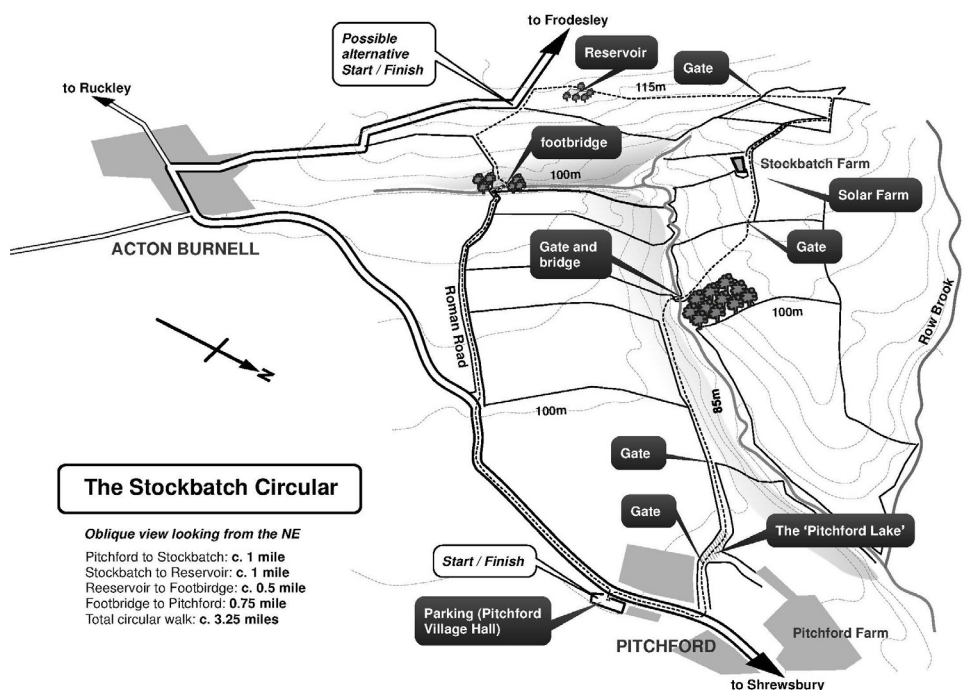
right and open field to your left. At this point you need to turn an acute left and head out across the field to your left. At certain times of year, this may not be marked and at other times you may have to fight your way through the crops. By aiming for a distinctive single tree on the far side however, you will reach a small gate where you pass through onto a more clearly defined path and on an up to a small clump of threes surrounding a farm reservoir.

Pass the reservoir and take the track to the left hand of the two visible gates on the Frodesley road. You can go onto the road and turn left or you can parallel the road in the 'rough' at the edge of the field. After about 100 metres, you pass through a gate and then across another field down towards a far hedge which you then keep to the right of when you reach it. The slope dips downwards and at the end of the field there is a small indistinctive path that leads on down to the river and across a footbridge.

The far side is very lumpy underfoot - a consequence of the horse traffic which also uses this route, but eventually you rise up on the far side of the small valley into a track with hedges on both sides. This is part of the old Roman road known as Watling Street II, which linked Wroxeter (or Viroconium as it was called 2000 years ago) to south Wales. No signs today of the fabric of the road – just the iconic straightness of their lines of communication.

This track can be very overgrown, particularly in late summer, but assuming you make it onto the road just south of Pitchford, all you have to then do is dodge the torrent of cars escaping from local places of work to the south when the 'traps' are opened around 4.00pm as they charge to escape our rural idyll!

Choose the right day and at the right time of year, then this is just lovely.





News from **Pitchford Village Hall**

Fancy a curry? There will be an Indian Takeaway Night at Pitchford Village Hall on 15th June, when you can take advantage of the opportunity to enjoy a pre-ordered Indian meal from Mahim's Indian Takeaway, as well as the usual selection of Pub Night drinks. There will be no Nippy Chippy on this evening.

To order a curry, firstly please visit their website on **www.mahimindiantakeaway.co.uk** to make your choice from Mahim's wide ranging menu. When you have decided on your order, please email it to Gilly Turner at **gilly.turner5@btinternet.com** by 6.00pm on Thursday

14th June, including your name and address in the email. Your order will be delivered to Pitchford Village Hall around 8.00pm on Friday 15th June.

Please note that you will be responsible for paying for your order - even if you are not able to come along to the Village Hall.

There will also be Pub Nights as usual on 18th May and 20th July, with the Nippy Chippy in attendance.

If you are planning an event, remember that you can hire the Village Hall by contacting Mike Price on **07740 067955** or by emailing **price622@btinternet.com**.

Are your neighbours missing out?
Do you know of someone who would like to receive Village Views, but does not get a copy? We are working hard to make sure that everyone gets the chance to enjoy Village Views, but if you know of someone who does not get a copy through their door, then please contact villageviews@hotmail.com, and we will see what we can do!