

Village Views

SERVING THE COMMUNITIES OF ACTON BURNELL, PITCHFORD, FRODESLEY, RUCKLEY AND LANGLEY

WELCOME

After the winter floods and the recent freezing weather, everyone is looking forward to seeing more blue skies, sunshine, and hopefully the first signs of spring. Green shoots are already appearing in gardens and in the hedgerows, and we should soon be welcoming the first snowdrops of the year. At the time of writing, Acton Burnell Castle grounds still remain closed to the public while we wait for the trees damaged in the gales of 2023 to be made safe. Let's hope the work is completed soon, so that we can all get back to enjoying this very special place in the heart of our community!

If you would like to contribute to Village Views, we are always pleased to consider ideas for new features. Just email villageviews@hotmail.com with your suggestions or articles. Advertisers can get in touch with Rachel or Lois at villageviewsadvertising@outlook.com – they are always pleased to help!

Chris Harrison, Karen Fisher, John Glover, Rachel Johnson and Lois Johnson

INCREASE IN PARKING CHARGES



From 1st April, car parking fees across the county are set to increase with charges also being extended from 6pm to 8pm, and tickets needed for Sundays and bank holidays at car parks which currently offer free parking on those days.

In Shrewsbury, Frankwell will go up from 80p to £1.20 per hour, St Julians Friars from £1.20 to £1.60 per hour, and Abbey Foregate from 60p to £1. The multi-storey at Raven Meadows will stay at £2 per hour.

For Sundays and bank holidays, Frankwell and Abbey Foregate will move from free to half charge, and St Julian's from half price to full price. Where car parks currently offer a capped 8 hour maximum fee, this will disappear to be replaced with an hourly charge for all hours.

On-street parking will go up from £2.80 to £3.60 per hour, and season tickets for Shrewsbury car parks are also set to increase. Park and Ride in Shrewsbury offers a cheaper alternative to town centre car parks, with all day parking free when using the bus, which costs £2.00 return, but the last P&R buses leave Shrewsbury town centre at 6.30pm, and there is no P&R service on Sundays and bank holidays.

Elsewhere in the county, parking fees will generally increase by 20p per hour.

A report delivered to the Council ahead of its decision on 17th January said that the money raised would be used to "implement a programme of works to repair and improve the car park infrastructure" as well as developing residents parking zones in Shrewsbury town centre. The changes are expected to raise £1.7m which will be used to repair and improve the county's car parks.

TREE PLANTING ON THE LONG MYND

If you've got some spare time in the next couple of months, don't mind getting cold, wet and tired, and want to do something to help wildlife in our local area, you might want to think about volunteering to help with tree planting on the Long Mynd.

The Stepping Stones project is organising the planting of traditional hedgerows and 'woodrows' along field boundaries, as well as restoring old hedgerows at Barns Farm, which was bought last year by the National Trust.

These new and restored hedgerows will be stocked with a mix of native trees and shrubs, including hazel, hawthorn, oak, holly rowan and willow, and will provide food shelter and habitats for wildlife.

Vacancies for volunteers were still available on 8th and 29th February when we went to press, but this is a popular activity, so you may need to act fast if you would like to be involved. You can find more details by following the links on the Stepping Stones webpage at www.nationaltrust.org.uk/visit/shropshire-staffordshire/carding-mill-valley-and-the-long-mynd/volunteering-at-carding-mill-valley-and-the-long-mynd#rt-volunteer-opportunities-and-events.

You can also sign up to the Stepping Stones Project mailing list to be kept updated on future initiatives and volunteering opportunities.

CRESSAGE BRIDGE CLOSURE

Shropshire Council has announced that Cressage Bridge will be closed to all traffic, including cyclists and pedestrians, from 29th January to 5th April to carry out essential repairs. The bridge carries the B4380 (which runs from the A458 to Eaton Constantine) across the Severn.

The work will involve bridge strengthening work, with the installation of a new concrete slab and waterproofing system. The new waterproofing system is planned reduce water penetrating the arches.

Diversion signs will be in place, but the Council warns that the road closure will be in place 24 hours a day, 7 days a week. People living along or visiting homes along the route will still be able to gain access as far as the bridge in both directions.

The closing date for contributions to the next edition will be 19th April 2024.

Please contact villageviews@hotmail.com with any news or villageviewsadvertising@outlook.com to place an advert.

PITCHFORD VILLAGE HALL PHOTOGRAPHY COMPETITION AUTUMN WINNERS!



Gun Powder Lit Woods
Jeanette Reaney

The Autumn round of the PVH Photography Challenge gave us 15 spectacular entries from around the local area, stretching from HQ in Pitchford and including Leebotwood, Ryton, Acton Burnell, Dorrington, Frodesley, Lawley and Cressage. As before the photos captured the variety and beauty of our local surroundings, covering landscapes and skyscapes, sunsets and sunrises, woodlands and uplands.

Congratulations and thank you to everyone who entered, especially our winners:

1st: Gun Powder Lit Woods (Jeanette Reaney)

Joint 2nd: Our Magnificent Patch and Wrekin from Cressage (John Glover and Robin Mitchell)

Joint 3rd: The Calm after the Storms and Lodge Hill. (Anna Morris and Steve Hemming)

All of the photos entries provided a great back drop for our the PVH Pub Night showreels and the winner has provided our Facebook profile backdrop for the season and entry into the grand Final for the PVH Photo of the Year!

The final round for Winter is underway...and entries are coming in! We are looking for digital photographs, taken between 21 December and 21 February within a 5 mile radius of PVH that capture the essence of Winter. We are expecting some flood scenes in this round for sure! If you would like to enter then choose your best photo and send it to PVHphotochallenge@outlook.com.

Every round of the Photography Challenge has been carefully and expertly judged by our panel of volunteers. They have the pleasure of examining each of the anonymised entries and independently scoring them, to find us our winner. As we approach our final round of judging, on behalf of PVH, we would like to thank Philip Dunn, Karen Fisher and Andrew Roberts for giving up their time to support this event. We would especially like to that Philip for his professional expertise – if you are interested in finding our more about Philip and his photography work you can visit his website at www.photoactive.co.uk.

Miriam Davies



Our Magnificent Patch
John Glover



The Calm after the Storms
Anna Morris



Wrekin from Cressage
Robin Mitchell



Lodge Hill
Steve Hemming

Congratulations!

NEWS FROM PITCHFORD HALL

Marches of Time History Festival

We are running the Marches of Time History Festival again this year after the success of the inaugural event last September. The two venues are Pitchford Hall and Stokesay Court near Ludlow and the Festival runs over the weekend of 14 and 15 September 2024. We will start releasing our speaker programme over the coming months and will also introduce historical re-enactment and living history to the Festival this year plus an enhanced catering offer. Please visit the Marches of Time website to register your interest and find out more about the Festival: www.marchesoftime.com or follow Pitchford Estate on Instagram and Facebook @pitchfordestate and we'll keep you updated.

Guided tours of Pitchford Hall and Treehouse

Thanks to all the Pitchford Volunteers – many of whom live in the Parish – we'll also be starting our guided tour season again in March. The guided tours of the Hall and Treehouse last for 90 minutes and then we have tea and cake in the Orangery & Walled Garden.

For more information about the tours visit the Historic House website: www.historichouses.org/house/pitchford-hall. Our restoration focus this year will be on the Georgian Plunge Pool and the Ice House – both of these buildings can be viewed during the guided tours as well as restoration work on the Hall itself.

James Nason

CONCORD COLLEGE PRODUCTION OF



THE BROADWAY MUSICAL

©Disney

MUSIC BY
Alan Menken

LYRICS BY
Howard Ashman
& Tim Rice

BOOK BY
Linda Woolverton

Originally Directed by Robert Jess Roth

Originally Produced by Disney Theatrical Productions

This amateur production is presented by arrangement with
Music Theatre International

All authorised performance materials are also supplied by MTI
www.mtishows.co.uk

Tuesday 6th Feb – 7.30pm Concord Students only

Wednesday 7th Feb – 1.30pm Primary School Students

Wednesday 7th Feb – 7.30pm Concord Students and External Visitors

Thursday 8th Feb – 7.30pm External Visitors only

Price – FREE

To reserve tickets please email Emily.purvis@concordcollege.org.uk

Location: **Morris Building Theatre, Concord College, Acton Burnell**



What's on

1st February to 29th May

Attingham Park will be hosting a number of 'Nordic Walk' sessions, offering a sociable, fitness-focussed walk using Nordic Walking poles in the grounds and park at Attingham. Participants must have completed an introductory 'Poles of Power' or 'NWUK Learn to Nordic Walk' course. 'Poles of Power' sessions can be booked by contacting Beverley Turner on 07980 266964 or beverley@walxinthemarches.co.uk. More information on walk dates and booking details at

www.nationaltrust.org.uk/visit/shropshire-staffordshire/attingham-park/events.

4th February

The English Haydn Festival will be offering an afternoon of classical music at Pitchford Hall, from 2pm to 5 pm. Tickets available from www.ticketsource.co.uk/haydn-festival-trust at £32.00 (plus booking fee) for concert only, or £42 (plus booking fee) for the concert plus a guided tour.

7th and 8th February

If you feel the need for a little magic in your life, then come along to Concord College's production of Beauty and the Beast. Local residents are very welcome to attend these free performances, which will begin at 7.30pm. Admission by ticket only, available by contacting Emily.purvis@concordcollege.org.uk.

9th February

Come along to Pitchford Village Hall monthly Pub Night for beer and banter (wine, soft drinks and polite conversation also available) and darts! Doors open at 7.30 and everyone is welcome, including children and dogs. Please note that the bar is cash only.

12th to 16th February

Examine some local fossils and learn about the fossil hunter Mary Anning at Shropshire Hills Discovery Centre. Take part in a virtual dig to uncover some ancient reptile bones. Suitable for ages 3 to 11 years. Booking essential on 01588 676060. £4.50 per child.

15th to 17th February

Enjoy a magical evening stroll among the snowdrops at Attingham Park. The woodland will be illuminated with fairy lights and floodlights, and there will be light projections in the Walled Garden. Lights will be turned on at 5.30pm, last entry will be 6.45pm and the park will close at 7.30pm. Entry free for National Trust members, and for non-members

£11 for adults and £5.50 for children. No need to book, but remember to wrap up warm and bring a torch.

17th February

Enjoy the dramatic landscape around Stiperstones on the Stiperstones Special hike, covering 13.5 miles. A fully guided hike, with tickets at £35 per person. Book at www.themountaincoach.com.

23rd February

Thanks to Flicks in the Sticks, Barbie (rated 12) is showing at Cound Guildhall at 7.30pm. Tickets £5. Enquiries to 01743 761451.

8th March

Join your friends and neighbours at Pitchford Village Hall Pub Night. Doors open at 7.30pm. A friendly welcome for all comers is guaranteed! Cash bar.

16th March

Circular hike starting from Church Stretton and heading up into the Shropshire Hills. Fully guided. £25 per person. Book at www.themountaincoach.com.

22nd March

A Haunting in Venice (rated 12A) showing at Cound Guildhall at 7.30pm courtesy of Flicks in the Sticks. Tickets £5. Enquiries to 01743 761451.

23rd March

A special Pitchford Village Hall 'Breakfast Butties and walkies' event to coincide with Action with Communities in Rural England's Village Halls Week. The theme for this year is sustainability, focussing on energy efficiency and moving towards Net Zero. Check out the Pitchford Village Hall Facebook page for more details nearer the time.

6th April

A weekend of walking (or running!) in the Shropshire Hills to raise money for the Shropshire Hills Discovery Centre. Choose from 6.5 mile, 13 mile, 26 mile and 50 mile distances. Entry fees and more details at www.shropshirehills-nl.org.uk/aonb-events/shropshire-way-80k-fundraising-walks or call 01588 676060 for more information.

12th April

Pub Night at Pitchford Village Hall starts at 7.30pm. A choice of beer, wine and soft drinks is available from the cash bar. Four legged friends, children and well-behaved adults all welcome.

Wine Tasting Evening at Pitchford Village Hall

The Village Hall is hosting a wine tasting evening on Friday 15th March this year, at 7.30pm.

The event will be run by local wine expert Jeremy Cowen of the Wine Assessors Club of Shrewsbury. Apart from simply having a thoroughly enjoyable evening, the event is designed to give you an insight into appreciating what a good wine should be like and how to taste and assess this. Aspects such as what to look for in terms of colour, nose and palate will be integral to the evening. We will also learn about the different grape varieties, what to look for when buying wine from whatever source you go to and where the best value wines can be found as well as how to pair wine with food.

While all of that may sound a little complex, what this really boils down to is how to spot good tasting wines, how to enjoy them and where to get the best deals! Specifically, these will not be 'high end' wines, but affordable wines from local supermarkets such as Aldi and Lidl.

There will be 6 wines to taste, a bubbly wine, two whites (chardonnay and sauvignon blanc), two reds (cabernet sauvignon and a shiraz or blends containing them) and a rosé. To accompany these, there will be various nibbles.

Jeremy is an expert in wine having been affiliated with the wine trade in South Africa for just under 50 years. He has also run his own cookery school and sits on various wine tasting panels for Wine Style Magazine and various supermarkets, so clearly he knows what he is talking about and by all accounts is very entertaining. We hope you will come along to support the hall, gain some extra knowledge which will help you to enjoy your tipples more and most of all, have a really pleasant evening!

The cost of the event will be £20 which includes all your wine and nibbles. If you want to attend, could you to email me at jbglover@outlook.com to confirm your attendance and how many tickets you would like, and then to pay by BACS. Details are: Account Name: Pitchford Village Hall Account No: 76831213 Sort Code: 51-61-06

We have a maximum of 40 places so if you are interested, it might be an idea to reserve your tickets sooner rather than later! Further updates will appear on the ABC facebook pages along with those of the Village Hall.

John Glover

EASTER HIGH-JINKS

Looking for ways to make the most of an Easter break? Here are some events to tempt you!

From Monday 25th March until Sunday 7th April families can have fun searching for 12 giant eggs hidden around Shrewsbury. Find them all and solve an Easter riddle to have the chance to win one of five local shopping vouchers worth £100. Pick up an Easter Trail postcard and map from the Shrewsbury Museum and Art Gallery, Shrewsbury Library or download from www.originalshrewsbury.co.uk/events/easter-trail.

On 29th and 30th March the British Ironwork Centre at Aston, Oswestry, will be hosting a Homemade Festival, featuring local artisans, crafters and makers.

Get your running gear on to take part in the second Shrewsbury Easter Dash at The Quarry Park and raise money for Severn Hospice. There are 2.5K, 5K and 10K options to suit all levels of experience, with a medal and Easter egg for all finishers. Book your place at www.allevents.in/shrewsbury/shrewsbury-easter-dash-2024/200026040287127.

Head over to Blists Hill Museum in Ironbridge to celebrate a Victorian Easter with egg hunts, a poster trail and Victorian egg dancing! Events taking place from 23rd March to 14th April, with the bonus of a 'steam in miniature' weekend on 13th and 14th April, which will see the streets of Blists Hill filled with small-scale steam engines.

If your children are interested in the future rather than the past, they may prefer a visit to Ingenuity at Ironbridge, where they will have the chance to become an Eggstronaut. Young eggstronauts will be challenged to design a special spacecraft that will protect Captain Eggbert and Lieutenant Scrambled Egg from a messy end! Takes place every day from 23rd March to 7th April. There will be an additional charge for this activity on top of the Ingenuity admission price. Go to www.ironbridge.org.uk/visit/ingenuity/ for more information.

Many National Trust properties will also be holding East egg hunts over the Easter weekend. Check for details at www.nationaltrust.org.uk/visit/whats-on/easter-egg-hunts during February to find what's on offer locally.

SUPPORT YOUR LOCAL HOSPICE

Severn Hospice and Hope House Hospice both rely on donations and fundraising to continue their valuable service to the local community. If you would like to help support their work, there are a number of opportunities to take part in fundraising, with the emphasis on fun!

On **1st March** Severn Hospice is throwing down the Fire and Ice Challenge. Dare to walk over red-hot coals or over broken glass to raise cash for the Hospice. Organised by Fire Walk UK, there will be a motivational safety talk, and although fire and ice walking is considered safe, there will be trained First Aiders on hand just in case! Friends and family will be able to come along and watch the event at The Albrighton Hall Hotel, Shrewsbury, with hot food, a licenced bar and a DJ to keep everyone entertained. Go to <https://events.severnhospice.org.uk/> for more details and to book your place.

The **16th March** sees Severn Hospice's Pontesbury Potter taking place. This is a 13 mile orienteering challenge, which is perfect for fell

runners, ramblers and walkers, but be prepared – this 'potter' includes slippery slopes, rocky path and steep climbs! Set off from Mary Webb School by 8.45am and aim to be back by 5pm. Book at <https://events.severnhospice.org.uk/>.

If you would rather come up with your own fundraising project with your work colleagues or study buddies, then take a look at Hope House's £50 Challenge. Get together a team and nominate a captain, sign up, and you'll be given a £50 starting investment to kick start your fundraising ambitions. You could use the cash to buy ingredients for bake sales and coffee mornings, hire a venue for a quiz night, or provide a course for a family fun run. You'll need to plan to target your fundraising activities to take place between **4th March and 22nd April**, and will get help and support from local fundraising support to help you get press coverage and assist with ideas and resources.

Click on www.hopehouse.org.uk/50challenge to register your team.

If you prefer your fundraising to be less challenging, Hope House is also organising a 10 mile walk along the Llangollen Canal, starting and finishing at the Pontcysyllte Aqueduct. Every walker will receive a medal and a goody bag to thank them for their efforts. Go to www.eventbrite.co.uk/e/llangollen-canal-walk-2024-tickets-774427291877 to purchase a ticket and book your place.

Daredevils may prefer to have a go at the Hope House Tandem Skydive. From an aircraft 10,000 feet up in the skies over Shropshire, participants will freefall for around 30 seconds before gliding to the ground. All jumpers will be supported by one of Skydive Tilstock's professional skydivers. There is no fee to take part, but you will be asked to pay a booking fee of £50 to secure your place, and will be asked to raise a minimum of £400 in sponsorship. You will also need to be aged between 18 and 70, and there are also strict height and weight requirements. More information at www.hopehouse.org.uk/Event/skydive.

LONG DISTANCE WALK FOR LINGEN DAVIES CENTRE



people I know personally and I am hoping to raise money to ensure their work continues.

Donations can be made via Just Giving, and there are two easy ways of getting onto my Just Giving page. The first is to use the link below:

www.justgiving.com/page/dennis-wicks-193miles2c-1705512525600

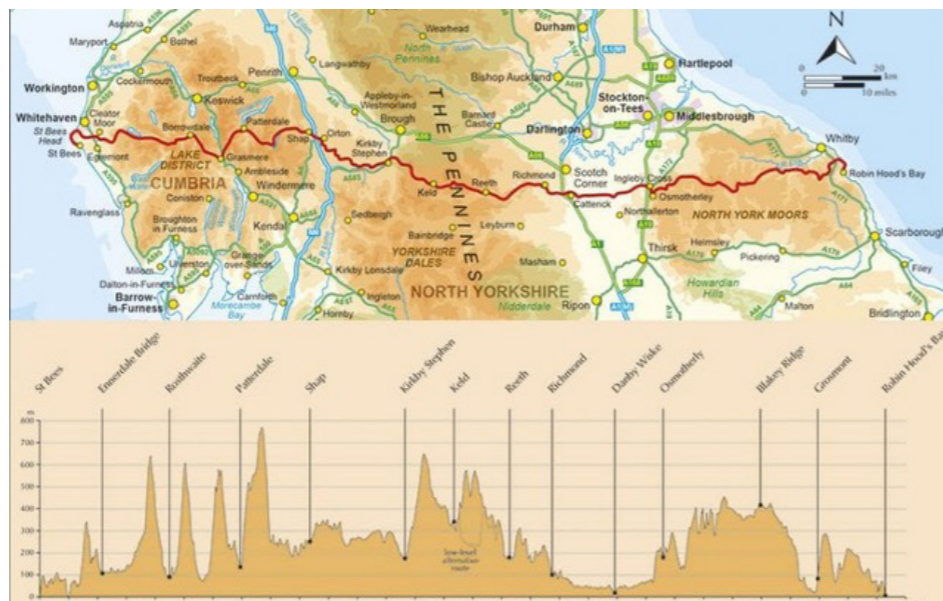
In May Dennis Wicks of Pitchford will be tackling a challenging 193 mile walk to raise money for the Lingen Davies Cancer Treatment Centre.

Dennis explains, "The walk is from St Bees on the West Coast to Robin Hoods Bay on the East Coast and takes in some of the most stunning scenery in the Lake District, Yorkshire Dales and North York Moors National Parks. I will be walking 193 miles with an ascent/descent of 29,000 feet over 16 days, starting on the 20th May.

I have always planned to do this and since retiring I now have the time. I think that as well as me getting the opportunity to enjoy this, others should benefit from my foolhardiness! Lingen Davies is a local (Shrewsbury) Cancer Treatment Centre that is funded by Charitable Donations. They have made a positive difference to

The other way is to go to the 'Just Giving' site and 'Search' under Dennis Wicks which will bring my page up. I will be updating my site as I travel and will let sponsors know how the trip is going along the way. All support for Lingen Davies would be greatly appreciated."

We'll be updating readers on Dennis' fundraising efforts in future editions of Village Views and wish him all the best of luck with his plans!



MESSAGE FROM COUNCILLOR DAN MORRIS SHROPSHIRE COUNCILLOR FOR BURNELL

The Shrewsbury Big Town Plan Partnership has developed a plan for transforming how people travel in and around Shrewsbury over the next 10 years. The Shrewsbury Moves strategy includes a raft of proposals to reduce through-traffic, improve public spaces and encourage people to spend longer in the town centre. The ultimate goal of the partnership is to make Shrewsbury one of the most inclusive, accessible and economically vibrant towns in the UK.

The Shrewsbury Moves 10-year strategy follows the publication of the Shrewsbury Big Town Plan Masterplan Vision in 2021, and outlines a range of innovative ways of improving the town centre environment. Among the key proposals in the strategy are:

- The introduction of traffic loops to reduce the amount of traffic driving through the town centre.
- Prioritising public transport with a two-way bus corridor through the town centre making buses quicker and easier to use.
- Incentivising the use of car parks on the edge of the town centre, and the use of an extended and improved Park & Ride service, along with more public bus services.

- The creation of more public spaces, such as creating new town squares and improving the gateways to the town centre.

The strategy has been developed by industry-leading transport, engineering and placemaking consultants, PJA, following a huge amount of discussion and debate with community groups, councillors and businesses. Some of the proposals might be surprising, but the council urges everyone to take the time to consider them and how they would impact the town centre as it's about considering a different approach to the way people travel in and around Shrewsbury.

There was a public discussion around the Big Town Plan's Masterplan Vision in 2021, and that showed it was clear that people wanted to see a change in the way we all move in and around the town. There was a view that that there was too much through-traffic and the streets were dominated by cars, resulting in poor air quality and at times a noisy, unpleasant environment. The low traffic trial for example, where traffic is restricted from the centre of town on Saturdays and Sundays, has enabled a pavement cafe culture to flourish. This strategy provides a variety of ways to

build on that success – reclaiming the streets for pedestrians and cyclists, giving priority to public transport and making the town centre more inviting.

Maintaining access for businesses whilst reducing traffic congestion was also a key consideration throughout the development of the strategy. The strategy does appreciate that people still need the option of driving into town and businesses will always need to receive deliveries and other servicing access, it just suggests ways of doing that differently in the future. A major consultation is due to start on Friday January 26, with a town trail and interactive website explaining the strategy and asking for feedback, along with displays in St Mary's Church in the town centre which will share information and give people the opportunity to get involved.

If there are matters you think I can help on, please do get in touch by email dan.morris@shropshire.gov.uk, by phone on 07902 408400, on facebook [dan4burnell](https://www.facebook.com/dan4burnell) or Twitter [@dan4burnell](https://twitter.com/dan4burnell).

** The consultation is due to run until 22nd March. Check out the Shropshire Council Facebook page for more details.**

Dan Morris

SUSTAINABLE WARMTH SHROPSHIRE – HELP FOR 'OFF GAS' HOMES

The Government has introduced a grant scheme (the Home Upgrade Grant) aimed specifically at those homes which – like all of ours – are 'off gas'. In Shropshire the scheme is known as Sustainable Warmth Shropshire.

To apply, you need to be a homeowner and have lived in the property for more than 6 months. Private tenants can also apply, but the landlord has to agree to the application and may be asked to make some financial contribution to improvement works, and the property must have an energy performance certificate (EPC) rating of D, E, F or G. If you don't know your property's rating, you can find out when you apply.

In most areas, you need to have a household income of £31,000 a year or less, or be in receipt of means tested benefits. Households are automatically eligible if they receive a council tax

rebate (excluding the single person rebate), have a long term health condition or disability that is affected by living in a cold home, or receive free school meals.

If you're eligible, Shropshire Council will arrange a home survey to see how your home could be made more energy efficient. They might suggest improvements like installing wall, loft and underfloor insulation, air source heat pumps or electric radiators. The council will then organise and pay for any improvement work they've agreed with you.

For more detailed information and to apply, please go to <https://next.shropshire.gov.uk/housing/private-sector-housing/affordable-warmth-and-energy-efficiency/sustainable-warmth-shropshire-expression-of-interest/>.



ALABAMA ROT

A local vet's practice has warned that there has been a case of Alabama Rot (or CRGV) in a dog in the Cleobury Mortimer area. Although this is some distance away, it may be worth checking your dog for signs of this nasty disease.

Infected dogs usually display unexpected skin sores on their paws or legs. It is not yet known what causes CRGV and it remains a very rare disease. Most cases occur between November and May and there is some evidence of a link to walking in wet, muddy woodland areas. It may be beneficial to wash and dry your dog after a muddy walk. Current advice is that there is no need to avoid walking in certain areas.

Signs to look for are skin sores not caused by a known injury, particularly on the legs or paws, swollen or red skin. Contact your vet if you see these signs on your dog (but remember that CRGV is still very rare in the UK – so don't panic!).

Most dogs that develop only skin sores make a full recovery, but some go on to develop kidney problems, or kidney failure which can be fatal. Kidney problems can show up as vomiting, fatigue or loss of appetite.

PARISH COUNCIL NEWS

CONCORD COLLEGE EXPANSION

The Parish Council held an extraordinary meeting on December 4th to consider plans for an extension to the main sports hall and a new hall of residence.

The plans can be viewed at:

<https://pa.shropshire.gov.uk/online-applications/centralDistribution.do?keyVal=S3CVX6TDL4900&caseType=Application>

and:

<https://pa.shropshire.gov.uk/online-applications/centralDistribution.do?keyVal=S3CVP0TDL4700&caseType=Application>

A number of local residents attended to express their concerns. The College Bursar was also present to discuss and respond to the points raised.

The Council did not object in principle to the expansion which would allow rationalisation of student accommodation, more ready compliance with safeguarding requirements and an increase in student numbers to permitted DfE levels.

However, following consideration of the views expressed and having reviewed the plans ahead of the meeting, the Council agreed to formally object to the proposed siting of the new hall, a three-storey building, which the current plan shows sited with the end elevation against Evenwood lane, opposite the Acton Pigott junction. The imposing main elevation would be in full view of anyone approaching or leaving Acton Burnell. The Council was concerned that such a large building so visible on the approach to Acton Burnell will become a local landmark, recognisable as the gateway to the village, overshadowing the current beautiful views and heritage buildings and dramatically changing the character of the village. The plan was seen to be a complete contrast to previous College works which have been sited well within the grounds allowing screening with trees and hard landscaping.

Concerns were also expressed regarding site traffic during construction of both projects, potential light pollution and the need to adopt materials which are sympathetic to the existing local natural and built environment.

In addition to posting a formal objection the Council has written to the trustees expressing these concerns. The trustees have responded noting the concerns and have agreed to review the siting of the hall. A formal decision from Shropshire Council should be received by 7th February.

OTHER NEWS

The Council met on November 14th and January 16th. The main items discussed were as follows:

Commenting on the report from our Shropshire Councillor, Dan Morris, the Council commented that much of the focus remains on developments in Shrewsbury while increased car parking charges and extended charging periods are set to have a negative impact on the large rural community who have no option but to drive as bus services in many areas are virtually non-existent (one bus for weekdays- term time only- and Saturday mornings for Acton Burnell). The Council agreed to submit appropriate comments to Dan and to Shropshire Council.

The plans for developments at Denver House were reviewed and discussed with input from the owners who were present. The plans can be viewed at:

<https://pa.shropshire.gov.uk/online-applications/caseDetails.do?action=dispatch&keyVal=S507LCTDM7G00&caseType=Application>

While the conversion of the range of barns behind the existing house and of the old butchers' shop was felt to be warranted and could be supported, conversion of the dutch barn was not seen to be of sufficient conservation merit to override the general 'open countryside' designation for the area which does not permit open market residential developments due to lack of amenities; communication links, etc. The Council agreed to post an objection on these grounds.

Acton Burnell Castle remains closed awaiting work on a number of trees which have been found to be unsafe. The Council has been in contact with English Heritage since the closure and continues to press for the work to be completed as soon as possible.

The Council will be requesting quotations for the village gateways in the next few weeks and the new 30mph speed limit for Frodesley should be in place in the first quarter of 2024, although this has not been reconfirmed.

With regard to highways, it was noted that potholes continue to be a problem, with repairs which do occur through "Fix my Street" reports often not lasting more than a few days. It was also noted that gritting does not seem to have been carried out on the school bus route through Acton Burnell and Ruckley. The Council agreed to submit comments to Shropshire Highways.

It was agreed to arrange an inspection of the bus shelter at Pitchford where some maintenance seems to be needed.

The Council agreed a budget for 2024/25 and agreed to maintain the current level of precept. Funds which are not required during the coming year have been invested in a high interest fixed term bond.

Papers and draft minutes are available at www.actonburnellparishcouncil.org.uk/meetings

The next regular Parish Council Meeting was set for Tuesday 5th March 2024 at Pitchford Village Hall to start at 19:30.

An Extraordinary Meeting was arranged for 30th January to discuss re-submitted plans for Castle Barns development (available at <https://pa.shropshire.gov.uk/online-applications/applicationDetails.do?keyVal=S630WPTDMDM00&activeTab=summary>).

SEASONAL RECIPES

The period from February to May sees the weather slowly warming, and the appearance of an abundance of spring vegetables (as well as a glut of chocolate around Easter!). During February the weather is still very much on the chilly side and everyone is craving something to keep the cold out. And so the first seasonal recipe is....



ROOT VEGETABLES WITH LENTILS AND HERB PISTOU

Root vegetables are relatively cheap during the winter months and are locally grown, so minimal food miles with this recipe. Herb pistou makes it just that little bit special, and lentils add texture and protein.

Ingredients (to serve 4)

600g of any root vegetables (carrots and parsnips are good, but any root veg will work, and onion and celery can also be added)
1 tbsp rose harissa
3 tbsp oil
150g baby spinach (frozen is fine – allow to defrost before using)
Small bunch of coriander
Small bunch of mint
1 garlic clove
Juice of 1 lemon
30g mixed, toasted nuts
500g cooked puy lentils (pre-cooked or cook your own in stock)

Peel the root vegetables if necessary or preferred, and cut into even chunks. Toss in the harissa and a little oil. Tip onto a baking tray or shallow roasting tin and bake in a hot oven (200C, 180c fan or gas mark 6) until tender (usually around 45 minutes). Add the spinach and continue to cook for 5 minutes.

While the root vegetables are cooking, make the pistou by blitzing the remaining oil, herbs, garlic and nuts in a food processor until smooth. Add a little water if it is too thick to give a creamy consistency. Stir in the lemon juice and season to taste.

Warm up the lentils in a microwave or saucepan, and then stir into the root vegetable mix. Top with the herb pistou. Goes well with hot crusty bread!

PASTA WITH CHICKEN AND ASPARAGUS

By April, locally grown asparagus will begin to appear in the shops. Delicious just lightly steamed or cooked on a griddle, it is also a versatile ingredient. This is a super quick recipe!

Ingredients (to serve 4)

500g asparagus
1 lemon (or juice of around 1 lemon)
100g pancetta or bacon
500g pasta (farfalle works well)
50g butter
300ml double cream
2 cooked chicken breasts, or leftover roast chicken (around 250g), cut into strips
Nutmeg
Parmesan
Trim off any woody sections of asparagus and cut into short lengths, keeping the tips to one side. Cook stems in boiling water

for 4 mins, then add the tips and cook for 1 minute more. Rinse in cold water.

If using whole lemons, peel, remove pith and membrane and cut flesh into small pieces, keeping the juice to add later.

Grill pancetta or bacon until crisp.

Put pasta on to cook in boiling water.

Put butter and 150g cream into a large pan and warm over low heat for a few minutes, stirring occasionally until thickened slightly. Tip in the lemon pieces and/or lemon juice and add the chicken, asparagus and salt to taste. Turn off the heat.

When the pasta is cooked, drain and add to the pan along with the rest of the cream.

Mix well, adding black pepper, a little nutmeg and a grating of parmesan.

Top with the pancetta or bacon and serve at once.

If you want to up the flavour in this dish, you can also add wild garlic, which grows in abundance in Shropshire in springtime. You can forage for this in public spaces (only take a few leaves from each plant and never dig up the roots) but make sure you are away from heavy traffic or popular dog walking routes to avoid contamination, and always wash thoroughly. If you are unsure if what you are looking at is wild garlic, just rub a leaf gently and you should get a hit of garlic scent. If you fancy growing your own supply, nurseries sell seeds and young plants, but plant it in a container unless you want your entire garden overtaken with the plant! To use, just chop or tear the leaves and add to the recipe above towards the end of the cooking period.



CHURCH PREEN PRE-SCHOOL NEWS

Church Preen Preschool is a friendly, rural pre-school situated opposite Church Preen Primary School. We care for children between 2 and 5 years old, providing a fun and stimulating environment in which to learn through play. We also run Teeny Preenies, a Parent & Toddler group, for 0-5 year olds on Wednesday mornings.

This week we have been learning about birds and how we can help them over the cold winter months. We went on an exciting adventure into the surrounding countryside with our clipboards and spotted lots of different birds to tick off our lists. The children have also enjoyed

making bird feeders for our outdoor learning area and their gardens at home.

If you would like more information about our preschool, the funded places that are available or to arrange a visit, then please do contact us, either by email: maria@churchpreenpreschool.org.uk or call 01694 771 797.

Our next fundraising event will be 'Breakfast with the Easter Bunny' on Saturday 23rd March 2024. For more information and tickets, please email maria@churchpreenpreschool.org.uk or follow our Facebook page @preenpreschool.



NEWS FROM PITCHFORD VILLAGE HALL

PUB NIGHTS

These continue to run on the second Friday of each month. The bar always has a local 'real ale' along with a variety of other alcoholic and non-alcoholic drinks and occasionally we also put on food. It is, as always, a friendly and welcoming event open to anyone in the area whether you are new to our locality or have been here for years!! Any age is welcome but please remember this is a cash-only bar!! February's event will see a darts competition so bring your old arrows along and that in April will also see a couple of plant stalls for you to stock your garden with!

LOCAL WALKIES AND BREAKFAST BUTTIES

Or most recent event was at the beginning of last December. The hall is open for all concoctions of bacon, sausage and egg butties with vegan and vegetarian options along with free refills of tea and coffee. Hand in hand with this is a local walkies led by Miriam Davies and last Decembers event took place on a beautiful cold crisp winters day with a lovely group with new faces and some well known furry friends too. A new route of just over 6 km took about 1.5 hours, circling from the edge of Cantlop, past Windy Mundy

and Stockbatch, arriving back at PVH for delicious breakfast butties. Thank you to the locals who volunteered to shuttle us to the start point. The next event will be on Saturday 23rd March and this will coincide with ACRE's Village Hall events centered around 'sustainability'. Watch the Facebook pages for more information nearer the time!

FITNESS CLASSES

The new Wednesday night circuit classes have proved really popular, so much so they are continuing in 2024! This is a great class that works every part of your body and is suitable for all levels of fitness and ages. It is different every week and uses a combination of equipment and body weight exercises so never gets boring. The class is very friendly and great fun! Spaces are limited so booking (through Gemma) is essential and again, details of this are available on the Facebook pages.

PVH PHOTOGRAPHY CHALLENGE

The Winter Round of the competition is now open and details can be found in the separate article in this newsletter.

WINE TASTING EVENING

We are also hosting a wine-tasting evening and again, details are in the separate article on this edition of the Village Views.

As usual, if you have any other queries, feel free to contact the following:

Mike Price

(Chairman PVH Management Committee)
email: price622@btinternet.com
mobile: 07740 067955

Chris Jones

(Secretary PVH Management Committee)
email: csjay@btinternet.com
mobile: 07538 744807

Jeanette Reaney

(Tote Organiser)
email: jeanettereaney@hotmail.com
mobile: 07971 780963

John Glover



NEWS FROM MUCH WENLOCK AND CRESSAGE MEDICAL PRACTICE

Call Back System – Delay in Introduction

In December, the practice planned to move to using a new call queuing and callback system called Keep My Place in Queue. Unfortunately, there has been a delay in introducing the system, but it is still planned to introduce it as soon as possible.

At busy times, the practice will be using the new call queue system which will give patients the option to select a callback. There will be no additional charges for patients for any callback.

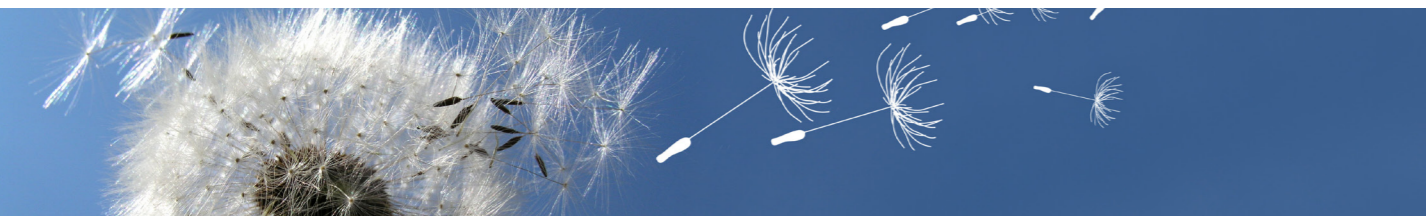
The practice website explains that calls will only be queued when the lines are really busy – when it's not busy you can

stay on the line and your call will be answered. All calls will be returned as soon as possible, but it will always be on the same day. All calls and callback requests will be handled in strict time order, so it will be a first come, first served service.

You will need to make sure your telephone number is not withheld, so that the system can call you back on the number displayed. Once you have requested a callback, you will be asked to wait for the practice to contact you – if you choose to call again, your previous call will be cancelled and you'll have to queue again.

Do You Need Support?

The practice has a newly appointed Community Care Co-Ordinator, Sarah, who is able to signpost patients to various help and support organisations within the community. She can help with advice on local respite care, transport services, sourcing medical equipment in the home, help in the home or around the house and much, much more. If you would like to speak to Sarah, please call the practice and ask to speak to the Practice Community Care Co-Ordinator.



CHURCH NEWS

28th March

Maundy Thursday Holy Communion
7.30pm Condover Church

29th March

Good Friday Vigil
12-1.00pm Condover Church
2-3.00pm Acton Burnell Church

31st March

Easter Day Holy Communion
9.00am Ryton Church
9.00am Frodesley Church
10.00am Condover Church
10.30am Acton Burnell Church
11.30am Pitchford Church

THE LENT COURSE

This year our weekly Lent Course will be exploring different aspects of something we enjoy three times a day – eating food!

These days, Christians observe Lent in different ways. It can be a time for reflection and meditation, self-examination and penitence, abstinence and acts of charity. Traditionally it begins with the wearing of ashes on Ash Wednesday, followed by forty fast days and six Sundays. The forty days remind us of the forty days spent by Jesus in the wilderness, being tested by the devil.

However you usually observe Lent, this year's Lent course can help you look more deeply at food issues and give you additional 'food for thought'.

Since Geoff and Anne retired last summer, we have managed to maintain our regular pattern of services across the five churches in our Benefice and we are extremely grateful to the mostly retired clergy who have made this possible and continue to do so. Our services for Lent and the Easter Season are set out below.

We have now advertised for a new Rector, although due to financial restraints this will only be a half-time post. The closing date for applications is Thursday 15th February, with interviews for suitable candidates taking place on 6th March. If all goes well, we could potentially have a new Rector by August.

Please remember those applying and those involved in the recruitment process in your prayers. We know what a big part of our community Geoff and Anne were and we hope our new Rector will be the same.

SERVICES FOR LENT AND EASTER 2024

14th February

Ash Wednesday Holy Communion
11.00am Condover Church

24th March

Palm Sunday Holy Communion
9.00am Ryton Church
10.00am Condover Church



NEWS FROM LONGNOR SCHOOL

Longnor School has had an exciting start to 2024 with the publication of our Ofsted report. We are delighted to have retained our Outstanding status. The report highlights the 'high expectations' of teachers and 'excellent behaviour and manners' of students, as well as praising the 'ambitious' curriculum. We are thrilled that the hard work and dedication of all our staff and students was recognised in this report.

We have recently received 24 brand new chrome books that we managed to fund through a grant from the NFU. We have been using these in our computing lessons and extra-curricular activities and children and staff are very grateful to the NFU for this excellent addition to our ICT teaching and learning.

We have started this year with several sporting events, including a

fun cricket tournament for Class 3 and a netball event for our netballers in Class 4. We are now looking forward to an exciting school trip to Birmingham later this term which will include a concert at the Symphony Hall and a visit to the Balaji Temple.

The children have established some fun new clubs this term, including Show Club which already has grand plans to put on a play later this term. Podcast club, nature club and drawing club continue to be popular and successful. We have also introduced some new after school activities including athletics and choir. We were very pleased that Ofsted highlighted the 'wide range of opportunities' children are offered and that 'all are encouraged to find their individual gifts and talents.'

We continue to work together to inspire a lifelong love of learning.

We will be asking questions like: How can Christians make their diet sustainable and ethical? What do we learn from Jesus' teaching about food? How does our grocery basket help, or harm, God's creation? Each week we will look at a different aspect of our relationship with food, with prayers, Bible readings and questions for group discussion, ending with a short act of worship.

We will gather at 7.00pm every Tuesday in the Millennium Room, in Condover Church as follows:

20th February

Lent 1: Food and Social Justice

27th February

Lent 2: Food and the Environment

5th March

Lent 3: Food and Animal Welfare

12th March

Lent 4: Food Producers and Production Impact

19th March

Lent 5: Food and Sacrament

All are welcome to attend. Each session will last about an hour, and don't worry if you can't commit to all of them, just come along to those sessions that you think you'll find most interesting.

Wishing you much joy and peace throughout 2024.

Jeremy Lowe

Licensed Lay Minister (Reader) Condover Benefice

Don't forget that you can keep in touch with your local community by using Facebook. Just search for Acton Burnell Community, Pitchford Village Hall or Frodesley Community Hub to see what events are taking place in your area. You'll need to join as a member to see who's in the group and what they post on the Acton Burnell page, but this only takes a minute or two.

England's Premier International School
ACHIEVING ACADEMIC EXCELLENCE
www.concordcollegeuk.com



enquiries@concordcollege.org.uk | 44 (0)1694 731631

Stanton Sweeps

Chimney Sweeping From £60

Services Provided:

- Wood Burners, Open Fires, Multi-Fuel Appliances
- Camera Inspections
- Smoke Testing
- Co Alarms Supplied
- Stove Service & Minor Repairs
- New Home Owners Survey
- Landlord Certificates

Shropshire Area
 Tel-07805643422

www.StantonSweeps.com Richard Davies



Want to advertise in this space?

For more information please contact

Rachel Johnson on
 07891 945704 or email
villageviewsadvertising@outlook.com



Are you worried about the current economic climate?
 Do you know how this is affecting your pension, savings or investments?
 Do you know if any changes are needed?

For a free review to discuss, why not book a free initial consultation with a locally based Independent Financial Adviser with over 25 years experience.

Please contact **Keith Croft** on
07815 075793 or email
keith@croftandoakes.co.uk
 to arrange your appointment.

www.croftandoakes.co.uk

Registered office
 Suite 7 Business Development Centre,
 Stafford Park 4, Telford, TF3 3BA



RIDGE FUELS COAL, LOGS AND GAS BOTTLES

QUALITY PRODUCTS AT COMPETITIVE PRICES
 LOCAL AND NATIONWIDE DELIVERY
 EXCELLENT RANGE OF FUEL FOR ALL APPLIANCES
 SELECTION OF MIXED WOOD INC KILN DRIED AND KINDLING STICKS
 SELECTION OF GAS BOTTLES
 CASH AND CARRY SHOP IN SHREWSBURY
 FREE ADVICE FROM OUR HELPFUL KNOWLEDGEABLE STAFF



Please ring us for more information on 01743 241122 or visit our website www.ridgefuels.co.uk

RIDGE FUELS LTD
 LMS NEW YARD
 CASTLE FOREGATE
 SHREWSBURY
 SY1 2EN



what3words - ARTS.RUINS.BURST



Instagram



Agricultural Merchants and Garden Machinery Sales, Service and Repair

Husqvarna Automower® • Specialist Animal feed
 Garden Tools and Compost • Calor Gas Cylinders
 Animal Health Products • Fencing Materials
 Equine Supplies • Shavings • Coal
 and much much more

Free local Delivery Service | Open to the Public
 Unit 85, Condover Ind. Estate, Shrewsbury SY5 7NH

01743 718955 | www.acefarmssupplies.co.uk
enquiries@acefarmssupplies.co.uk

Mon-Fri 8.00am – 5.00pm | Sat 8.00am – 12 noon

NETLEY

BOARDING KENNELS AND CATTERY

Nice rural location
 Heated kennels with outside runs
 Friendly family run business

Also offering doggy daycare

NETLEY KENNELS AND CATTERY
 Lower Netley Farm, Dorrington,
 Shrewsbury SY5 7JY
 07803240207 | 01743 623176



Hardwood Logs

Free local delivery

Seasoned, Barn Stored & Kiln Dried

Visit our website for our full range of logs, coal and kindling

01746 785606

www.logs2yourdoor.co.uk

Turf | Soil | Bark | Compost | Seed



A leading provider of landscape materials with a reputation for providing quality products.

01952 510386

www.shropshireturf.com