

Village Views

August 2020

SERVING THE COMMUNITIES OF ACTON BURNELL, PITCHFORD, FRODESLEY, RUCKLEY AND LANGLEY

WELCOME

Welcome to the third 'virtual' edition of Village Views. We hope you will enjoy the contents. If you do, then please share it with your friends and neighbours.

As restrictions begin to ease, we hope to return to a printed version in time for the November edition, so that it can also be enjoyed by members of our community who do not have access to the internet (or who just prefer a paper version!).

While we have been producing this electronic version, we have not been carrying adverts. However, as we move back to a paper edition, we will once again be offering the opportunity for local businesses to advertise in Village Views. We can offer our 61mm square box ads at £25 for four insertions (that's a whole year's advertising for only £25), with double size ads at £50. If you are interested in placing an advertisement, please contact us at villageviews@hotmail.com for more information.

We are also looking for a volunteer to join the Village Views editorial team to take particular responsibility for advertising – and also to provide general help with producing Village Views. This is a chance for someone to get involved with a worthwhile local service, so please contact villageviews@hotmail.com if you would like to discuss this opportunity!

Meanwhile, as Covid restrictions are slowly lifted by the Government, please continue to take care of yourselves, your neighbours and the local community. Stay safe!

Chris Harrison, Karen Fisher and John Glover

NEWS FROM THE PARISH COUNCIL

At the Annual Parish Council meeting in May, Cllr Paul Harrison was elected as the new Vice-Chair. Cllr John Long thanked the outgoing Vice-Chair, Cllr Keith Faulkner, who had previously spent many years as Chairman and had kindly stayed on as Vice-Chair to guide and support him over the last two years.

The Parish Council has supported the amended planning application for houses on the Albert Davies transport yard after the number of houses was reduced from 12 to 10 with the substitution of 2 bungalows instead of 4 semi-detached houses.

Please note that, following concerns expressed by Mr and Mrs Hartley, and further enquiries, it has been determined that the information from the Shropshire Council reported in the January Parish Council minutes regarding the lane between Pitchford and Golding Hall is incorrect and that this route is not open for public access. Apologies have been made to the Hartleys and the Parish Council requests that their privacy is respected.

The Parish Council should shortly receive the 'We Don't Buy Crime' signs which will be erected across the parish on existing traffic poles. It is also looking at ways to ensure that paths and bridleways through the countryside are kept free of thick grass, bracken and encroachment from hedges etc. Finally, it is exploring possibilities for additional and/or larger waste bins in Acton Burnell, particularly around the castle and church and on the corner of the crossroads in the centre of the village.

ACTON BURNELL SHOP RE-OPENS!

I am sure we were all pleased to see that the shop and Post Office in Acton Burnell has re-opened following its enforced lockdown closure. Current opening hours (as of 19th July) are Monday and Thursday, 9am to 12 noon. There are currently no newspaper deliveries.



WANT TO GET INVOLVED WITH VILLAGE VIEWS?

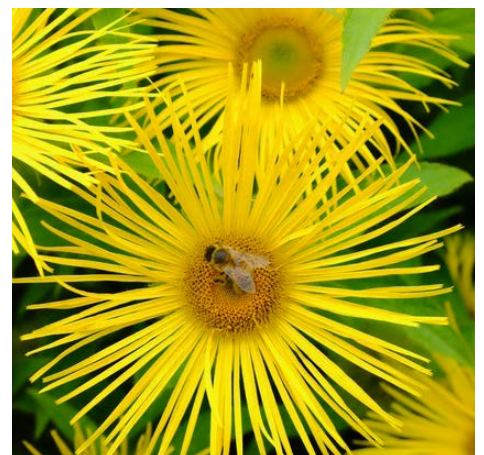
We are looking for a volunteer to help with organising advertising for Village Views and the community Directory. Village Views receives some valuable funding from the Parish Council, but the money we raise from advertising helps to pay the cost of printing.

Ideally, you will have a bit of local knowledge in order to identify possible advertisers, and be prepared to handle sending out annual invoices and following up payments where necessary. The rest of the team would be available to provide support and help whenever needed.

The editorial team usually meet around four or five times a year (tea and biscuits and the occasional glass of wine provided!), and in between we keep in touch by email. You will get plenty of support from the friendly team, and will have the opportunity to take part in decisions regarding Village Views and Directory content, funding and delivery.

You can be provided with a free email account to enable you to contact advertisers without using your personal account, but you may need to be occasionally available to be contacted by telephone.

If you are interested, please talk to one of the team for more information, email villageviews@hotmail.com or call Chris Harrison on 01694 731120.



Enjoy Summer Safely

Keep yourself and others safe



STOP

Shaking hands
or hugging when
greeting others



DISTANCE

Yourself from
others by 2m (6ft)
if you can



WASH

Wash hands
often and for
20 seconds



COVER

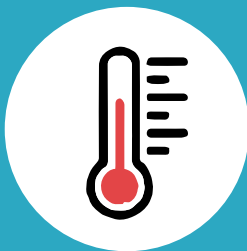
Your mouth when
coughing with
tissue or sleeve



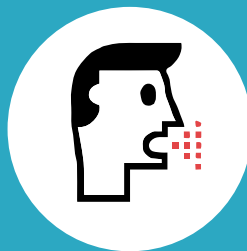
AVOID

Touching
your face

Coronavirus symptoms



High
temperature



New
Continuous cough



A change or
loss of taste



A change or
loss of smell

If you have these symptoms, you must **STAY AT HOME** and self isolate for:
7 days - If you have symptoms or have tested positive for coronavirus

14 days - if someone you live with has symptoms or tested positive,
or you've been told by NHS Test and Trace you've been in contact
with someone with coronavirus

Get tested- Call NHS Test and Trace on **119** or go online at **nhs.uk/coronavirus**

For advice and support during the pandemic (especially if you are self-isolating)

Call our Covid 19 helpline on **0345 678 9028**

Or visit our website at www.shropshire.gov.uk/coronavirus

NEWS FROM THE CHURCHES

These last three months have been very difficult for everyone. COVID 19 has been devastating in its impact on people's lives who have contracted it as well as family, community, social and working life as we have enjoyed it in recent times. The effects on our lives as community and church will continue to be different for months to come. Our churches were closed for a couple of months before we were allowed to open them for private prayer and reflection. We are now allowed to open them for public worship on Sundays and we have been able to do that from the beginning of July, starting at Pitchford on July 5th. We have guidelines to abide by – no singing, 2 metre social distancing, gel and wipes are available

and there are restrictions around the giving and receiving of Communion. The following plan is correct at time of printing, but it may change if restrictions are changed. However, I anticipate that this will be correct for at least July, August and September.

1st Sunday of Month

Pitchford Church 11.30am
2nd Aug, 6th Sept

2nd Sunday of Month

Condover Church 10.00am
9th Aug, 13th Sept

3rd Sunday of Month

Frodesley Church 11.30am
16th Aug, 20th Sept

4th Sunday of Month

Acton Burnell Church 10.00am
23rd Aug, 27th Sept

5th Sunday of Month

Condover Church 10.00am
30th Aug

Sadly we were unable to hold the Acton Burnell Fete and Bash in June and we are unsure about whether we are going to be able to hold anymore social and fund raising activities this year, so the Harvest Supper is on hold until further notice and unless the current restrictions on social distancing change.

The Benefice Magazine will be published again from the August edition onwards.

Rev. Geoff Garrett

LIBRARY RE-OPENING

There will be a phased re-opening of libraries across the county during August. Shrewsbury and Ludlow libraries re-opened on 20th July (opening hours Monday to Friday 10am to 12 noon, and 1pm to 3pm, Saturday 10am to 1pm, with Ludlow closed on Thursdays).

Church Stretton library will be open from 3rd August (opening hours Tuesday, Thursday and Friday 10am to 12 noon, and 1pm to 3pm; Saturday 10am to 1pm).

Bayston Hill and Much Wenlock libraries will re-open in August, but a date had not been announced as of 22nd July. Please check the Shropshire Libraries website at www.shropshire.gov.uk/libraries/library-news/phased-reopening-of-libraries/ for more information.

Libraries will also be offering a 'Ready Reads Collect' service from some libraries. To get your Ready Reads, complete the online form available from: www.shropshire.gov.uk/libraries/ready-reads-collect/ to tell the library what sort of books you're after and a few other details. Library staff will then put together a selection of books based on what you've told them and will contact you when they're ready to pick up from the library. This will be operated as a contactless service from library entrance foyers. Library staff will be observing all appropriate measures such as social distancing and frequent hand-washing, and any returned library books will be placed in quarantine for 72 hours.

If you've had library books at home since lockdown began, don't worry! All overdue fines are currently suspended so there's no need to worry if you have things on loan. Just aim to return them once your library is open.

BAG IT AND BIN IT

There has been an increase in the amount of dog waste being left around Acton Burnell, particularly around the church and castle, and on the footpath from the crossroads up to the entrance to the church and castle grounds.

You can place any bags in the bin at the crossroads or at the one at the entrance to the castle – or you can, of course, take it home and put it in your own bin! With the warmer weather, and with increased visitors to Acton Burnell, disposing of dog waste carefully is even more important.

And thank you to all the many responsible dog owners in the parish who take care to clean up after their dogs. It is much appreciated!

CAR PARKING CHARGES ACROSS SHROPSHIRE

Car parking charges were reintroduced in Shropshire Council's car parks from 14th July, as more businesses re-open and people are out and about in larger numbers following the easing of lockdown restrictions.

If you want to avoid using a pay and display machine, Shropshire Council offers the MiPermit system, which allows you to pay by app, text, phone or on the internet. You can choose to set up an account, or just pay for a single parking session. For more information on how the system works, please go to www.shropshire.gov.uk/parking/cashless-pay-and-stay-parking/ or check out <https://secure.mipermit.com/shropshire/application/home.aspx>

Free parking continues in all Shropshire Council car parks and on-street parking areas after 6pm (with the exception of Raven Meadows multi-storey in Shrewsbury), and in the almost 20 car parks in which charges don't apply.

The vast majority of car parks parking will remain free on Sundays and bank holidays (including Frankwell and Abbey Foregate car parks in Shrewsbury).



'Whats on' right now!



As the Government relaxes the measures introduced to combat coronavirus, more venues are opening up and events are beginning to be planned. As always, we make every effort to ensure that the information provided is correct and up to date, but please check before making arrangements are travelling to a venue.

NATIONAL TRUST

The National Trust has now opened most of its parks and gardens, although all houses remain closed. Entry to National Trust gardens and parklands is by pre-booked ticket only, in order to keep visitor numbers at a safe level. Tickets are released every Friday morning for the following week, and demand for popular sites has been high. You will be pleased to hear that take away tea, coffee, snacks and light lunches are available, and (most importantly) toilets are open. One way systems in gardens, cafes and toilets are in place to make social distancing as easy as possible.

In addition, more than 200 National Trust coastal and countryside car parks are open, so that you can safely park before enjoying a ramble or hike.

Go to www.nationaltrust.org.uk to find out which local parks and gardens are open, and to book tickets. Entrance is free to National Trust members (remember to take your card with you!) and entrance for non-members ranges from £8 per adult, £4 per child to £20 for a family of 2 adults and 3 children. Tickets

for timed entry, so please make sure you arrive at the correct time. Once booked in, you can stay for the whole day.

ENGLISH HERITAGE

English Heritage are also beginning to open their sites, and hope to have the majority open by mid-August. Wroxeter Roman City is available to visit, as is Witley Gardens. Entrance is by pre-booked ticket only. Tickets can be booked online via the website at www.english-heritage.org.uk/visit/reopening/.

GETTING OUTDOORS

The Shropshire Hills Discovery Centre at Craven Arms has re-opened. Explore their 30 acres of riverside meadows on foot or by bike. Entrance is free. A limited menu (eat-in or take away) is available from their café. Go to www.shropshirehillsdiscoverycentre.co.uk for more information.

Carding Mill Valley is open for ramblers, dog walkers and families keen to have some outdoor fun. The tea room is now serving takeaway food and drink, and ice cream is available from the kiosk, but please check on-line for changes. The toilets are open from 9.30am to 4.30pm. A little further afield, the Long Mynd offers miles of countryside walks with excellent views, but please be aware that parking can be limited at popular times.

The National Garden Scheme is also planning a number of open garden events around the county. In order

to keep numbers manageable, pre-booking will be needed in most cases. Shropshire gardens which will be opening to raise money for charity include Edge Villa near Yockleton, Ruthall Manor at Ditton Priors, Broadwood Hall at Clungunford, Sambrook Manor and Hodnet Hall. To see a full list please go to www.ngs.org.uk, where you will find dates and times of openings, and be able to book tickets. Information is updated every Monday.

The British Ironworks Centre (on the A5 towards Oswestry) re-opened on 21st July. The sculpture park and children's play area are now open for visitors, and the café is serving takeaway snacks and drinks. Free entry. Opening times are 10am to 4pm. Please see www.britishironworkcentre.co.uk for more information.

CINEMAS

Cineworld in Shrewsbury plans to re-open on 31st July, with a programme of films yet to be announced. The Old Market Hall cinema had no planned date for re-opening (as of 20th July), but is taking bookings for a few 'live' screened events, including 'Elvis: That's the Way it is' on 13th August, an on-screen visit to a Frida Kahlo exhibition on 8th September, and a Michael Ball and Alfie Boe concert on 12th & 13th September.

CRAFT FAIR PLANNED FOR EVENWOOD

Local crafters will be joining forces to run a craft fair at Evenwood Cottage on 30th August. The fair is the brainchild of Katrina Jones, who is hoping that local residents will pop along on the day to see what is on offer. Gates will open at 11am to 3pm, while stallholders can come along from 9am to set up.

Stalls will be carefully spread out to ensure social distancing, and hand sanitiser will be provided at the entrance for everyone to use. The stalls will be selling locally handmade items, including summer gifts and Xmas items from Kat's Krafts, as well as cards, crafty cakes, dog treats,

leather goods and more. There will be a tombola and a hamper raffle, with proceeds going to the NHS Charity, and stalls will also donate a percentage of their takings to the NHS.

If you are interested in having a stall at the fair, please contact Katrina on katrinaljones308@gmail.com.

Keep an eye out for updates on the Acton Burnell Community Facebook page, and also look out for local posters for more information..

Fingers crossed for good weather on the day!



MESSAGE FROM **COUNCILLOR DAN MORRIS** SHROPSHIRE COUNCILLOR FOR BURNELL

Covid19 is now thought to have cost Shropshire Council (SC) £36m. We have already received £18 million in grants to use however we wish and expect our share of the £500 million announced last week to be between £2 and £3 million, giving a figure of £20 million. Other pots from the Government should make the total add up to £32m. This will end up leaving a hole of £4 million which SC will have to finance.

The government has made it clear they won't cover loss of income where they think we can collect it ourselves, such as from car parking charges, so SC has reintroduced parking charges in town centre car parks from Tuesday 14th July, as more businesses re-open and people start to visit the towns in larger numbers following the easing of lockdown restrictions. It will remain free to park in all SC car parks and on-street parking areas after 6pm (with the exception of Raven Meadows multi-storey in Shrewsbury), and in the almost 20 car parks in which charges don't apply. And in the vast majority of car parks parking will remain free on Sundays and bank holidays (including Frankwell and Abbey Foregate car parks in Shrewsbury).

Overall that means we can cover our revenue budgets for this year and next if we maintain tight control of money and use some of our general fund reserves. We may need a spending freeze which stops directorates from spending and may include a stop to recruitment (unless clearly needed as in social services).

The government had invited councils to bid for capital funds for 'shovel ready' schemes that can be introduced quickly and these bids are being assessed through the Marches Local Enterprise Partnership (LEP). The schemes that are now approved by the LEP and going

forward to government are Paul's Moss at Whitchurch, refurbishment of the Pride Hill Shopping Centre, business park investment in Ludlow and Bishops Castle, a gigabyte voucher scheme to improve Broadband in the county and extra cash for the North West Relief Road/ Oxon Link Road project.

I have had a few conversations in the past weeks around the settlement status of Acton Burnell village. Each settlement (that isn't a market town) in the county is classified as either a Hub, Cluster or Open Countryside. All villages in the Parish are currently open countryside.

The key take-away from the recent local plan review is that there are unlikely to be many new houses built in the Parish, with one or two exceptions such as single plot sites and the conversion of existing buildings. The recent local plan review maintains the status of open countryside in the Parish villages and the reality is that it is unlikely that any villages in the Parish would ever be classified as anything other than Open Countryside due to not having sufficient settlement facilities and infrastructure.

As you know there was a petition set up to remove the Clive statue from the square in Shrewsbury. The signatures needed to be living from within Shropshire to count, and the number collected on one of the petitions breached the 1000 signature threshold so this went forward to full council on 16th July where the vote was for the statue status to remain in situ.

Following concerns about the recent amount of – and upsurge in – on-street parking by visitors to Carding Mill Valley, and the ensuing public safety issues caused, SC has introduced a 'prohibition of parking' on Shrewsbury Road and Churchill Road in Church Stretton.

The Shrewsbury Shopping centres were recently in the news having had a revaluation of £17m. They were bought as a) a long term investment and b) as a way of place shaping Shrewsbury. The initial £51m investment in the shopping centres was at the time the independent and audited valuation of the centres.

The investment has created a net benefit to Shropshire Councils revenue budget of £2.5m per annum (pre Covid) to spend on Council services. The purchase also has given the Council the opportunity to make our county town fit for the future. We can invest in the town, and improve on the look and feel of the town and adapt it to today's needs. The riverside shopping centre today is not fit for purpose; it is an eyesore. Would the previous owners have invested to make the centres fit for today's retail environment? All the signs are they wouldn't have. The purchase of the shopping centres was a bold statement of intent by the council to future proof the town. A risk? Yes possibly, any investment always carries a level of risk, but the loss is only realised if the sale is made at today's value. I'd ask that the council is judged on the long term investment decision it took in 10 years from now, not on the current week's statutory book valuation.

SC has recently welcomed an announcement that the new River Severn Partnership (RSP) is to receive £36m from the Government to help address the impact of flooding in towns and cities that sit alongside the river.

Have good summer break everyone! If there are any questions or queries please do not hesitate to contact me on dan.morris@shropshire.gov.uk or 07902 408400.

Dan Morris

WARMER HOMES FOR SHROPSHIRE

Free first time central heating installation is now available for eligible households in Shropshire, thanks to a new grant scheme to help people reduce their heating costs. More than 16,000 households in Shropshire are believed to be in or at risk of fuel poverty, meaning they struggle to heat their home and stay warm affordably.

Managed by Shropshire Council, the Warmer Homes Shropshire initiative, launched in May 2020, offers grants for

eligible households across Shropshire. The scheme is open to homeowners, as well as private tenants and their landlords.

Grants are available over the next two years to more than 300 households who don't currently have central heating, many of whom rely on expensive and inefficient heating systems such as night storage heaters or portable electric heating.

In addition to the grant, the council's Keep Shropshire Warm scheme can offer a

range of energy advice to help residents make their homes more efficient, cheaper and easier to heat, including to households in rural areas, where gas central heating may not be an option.

The team at Keep Shropshire Warm are available on **0800 112 3743** and can discuss the scheme in more detail, help residents apply and provide advice on any energy topic, big or small.



News from **Pitchford Village Hall**

This edition brings a mixture of good and bad news regarding the Hall and its use.

Sadly, the coronavirus outbreak has meant that we have had to close the Hall since March, meaning that, amongst other events, there has been no Pub Night since February. At a meeting in late July, the Committee decided that, despite a sustained opening up of our world in general, we have to keep the Hall shut. A risk assessment was carried out by the Committee based on Government guidance as of the 12th July with regard to the protection and safety of our users. This was found to be very demanding and prohibitively difficult to implement. If we decided to re-open now for example, as are many pubs and similar ventures, we would incur significant costs along with a minefield of 'paperwork' as well as a very real and very weighty legal burden on the Committee personally. Risk assessments, a location (cupboard!) for anyone to isolate in should they take sick, along with two complete sets of PPE (the other being for the designated person to look after them until the ambulance arrived), 2m floor markings, table service etc are examples of how this would make our task difficult. People coming to e.g. a Pub Night would have to sit in their 6 person maximum family bubbles and not interact closely with others in the room. This is at real odds with the purpose of Pub Night as a medium for the folk from the community to mix and chat. We would have to limit numbers to 30 to maintain 'social distancing'. Controlling directional flow to and from the toilets and entrances along with significant cleaning all further the difficulties a not-for-profit volunteer organisation, such as ours, would face. The above is but a snapshot of the regulations!

The final nail in the coffin however, is that, as 'Gathering Organisers', current COVID legislation states that the Committee is not recommended to open and if we did, in direct contravention of these Government recommendations, Committee members stand a real chance of being held liable should a transmission take place which could be traced back

to an event at the Hall. We await further guidance from Government as (hopefully) the pandemic reduces and we plan to review the situation in October. This could, with a fair wind (which is not a guarantee of course), mean the earliest we could re-open would be November. We keep our fingers crossed as we, as I imagine many of our 'locals' are too, are keen to re-open and get to meet with each other again!

The good news however comes in two parts.

Firstly, the Grand Onion competition which started back in March, will take place on Sunday 6th September with a possible back-up date of Sunday 13th. The plan is for competitors to drop off their onions in the car park at the Hall, place them on a paper plate to be provided, on which you will write your name and leave your £2 entry fee which you agreed to when you collected your onion back in March, and then leave. The entrants will be weighed that afternoon (onions, not people!) and the winners announced via the Acton Burnell Facebook page which will also confirm the details of the competition nearer the time. Cash prizes will be awarded asap after that!

Secondly, Shropshire County Council have awarded us two grants. The first was for £500 and was a COVID-19 Grant to cover loss on income (e.g. Pub Nights). The second was a 'Retail, Hospitality and Leisure' grant for a magnificent £10,000. As you will be very aware, the Hall is not in a good state of repair. This grant however, along with the enforced closure of the Hall for at least three months, means that we are now actively looking to use this sum to enable some of the necessary repairs to take place in the next few months, including the gable ends where subsidence has occurred but which the insurance company has seen fit not to pay for!

Every cloud and all that

Finally, we are asking for help from residents in Acton Burnell. Some of you will be aware that the Hall runs a 'Tote', with prizes drawn every month and awarded to anyone who has subscribed. The £12 fee raises £2400 each year for the Hall which

is split 50:50 between prizes and hall maintenance and is collected every late December or January for the year. Gilly Turner, who lives in Acton Burnell, is leaving the village and it was her job to go around knocking on doors and persuading the good folk of the village to part with their annual entry fee. As such, we are asking if there is anyone out there who would be willing to help with this at the end of the year. If you are thinking about volunteering and want to find out more, please contact our Tote Organiser, **Jeanette Reaney**, at jeanettereaney@hotmail.com. As usual, if you have any other queries, feel free to contact the following:

Mike Price (Chairman Pitchford Village Hall Management committee):
email: price622@btinternet.com
mobile: 07740 067955

Christine Jones (Secretary Pitchford Village Hall Management committee):
email: csjay@btinternet.com
mobile: 07538 744807

Let's hope the pandemic reduces to the extent that we can all return as much as possible to life pre-lockdown, and the Hall can re-open at the end of the year shinier, brighter and full of the wonderful community spirit which exists in our neck of the woods.

John Glover



An unidentified participant's onion growing nicely for the annual Onion Competition

DEFIBRILLATOR IN PLACE AT RUCKLEY

The final defibrillator is now in place at Ruckley Home Farm, making a total of four defibrillators available in the parish. The three additional defibrillators are sited at Acton Burnell (on the side wall of the Post Office), at Frodesley (in the telephone kiosk at the crossroads) and at Pitchford (to the left of the main door of the village hall).

The defibrillator can be used by any member of the public. It can be used if someone is unconscious and you think, or suspect, that they may have had a cardiac arrest or heart attack.

If you think someone has had a heart attack:

1. Before you do anything else-dial 999 to alert the ambulance service.
2. Go immediately to the defibrillator and unlock the cabinet door by entering the code which you will find on the door of the cabinet.
3. Picture guides and verbal instructions will lead you through the process to follow.
4. The defibrillator runs checks on the patient's heart rhythm, and only allows you to go ahead if defibrillation is needed – the defibrillator will not work on someone who is not in cardiac arrest.
5. The defibrillator may also instruct you to carry out CPR (chest compressions). The unit gives clear instructions on how to do this.

This information has been provided by the defibrillator suppliers and is meant for guidance only:

IN THE EVENT OF AN EMERGENCY, ALWAYS FOLLOW THE INSTRUCTIONS PROVIDED BY THE DEFIBRILLATOR UNIT.

SAFETY MEASURES FOR STUDENTS' RETURN TO CONCORD COLLEGE

Concord College will be reopening to international boarding students from 1st September, with day students coming in for the first time on 7th September. As we get ready to welcome students back to Acton Burnell, the College has put in place detailed plans to protect students, staff and the local community during this challenging time.

As part of preparations for reopening, a Covid-19 Risk Assessment Working Group has been meeting regularly throughout the summer months. Staff will be tested for Covid-19 from 27th August onwards and all students will be tested prior to beginning classroom-based lessons. It is expected that some students will remain in quarantine/self-isolation for 14 days from when they arrive in the UK in September. The village boarding houses will continue to accommodate boarding students, but students will be encouraged not to make use of the village shop or church or linger in the village other than to move to and from their residences. There will be no trips off campus into Shrewsbury (or elsewhere) during the month of September. However, this will be reviewed regularly as the situation and advice may have changed again by then.

Overseas parents are being asked to avoid coming to the campus for visits in September and the College is working to try and create a Covid-Safe bubble on the campus as far as possible. Day student parents will be asked to drop students off in our car park and avoid entering our buildings too.

Temperature testing of all those who come on campus is already in place, and all staff and day students are going to be issued with their own thermometers and asked not to come into College if they have an elevated temperature. The College will be encouraging and enabling students and staff to wear PPE including face coverings. Many other provisions are being put in place too such as more hand sanitiser stations, one-way systems, social distancing measures, a separate triage and treatment centre on campus for suspected cases, additional medical staffing etc.

Concord College is a member of the Boarding Schools' Association and has signed up to the BSA's Covid-Safe Charter.

Longnor C.E. Primary School News

Life at Longnor School during lockdown has highlighted many real positives. The whole Longnor School team has pulled together to support each other through this unparalleled, global crisis. Staff and children have quickly adapted to new ways of teaching and learning and people have remained positive with a good sense of humour.

There have been so many highlights during lockdown. The children took to online learning well and were given such a wide range of activities to do. These included a scarecrow competition, videos of story time, a spy school, bake off, and marble run, not to mention the older children recreating their missed trip to London in models. The creativity and imagination has been amazing and our parents really rose to the challenges of home learning.

Throughout the lockdown period we have run groups for the children who were eligible to be in school. There has been an ever increasing number of children returning to school and nearly every child in the school has been in for an outside moving up session.

Sports day was organised as a virtual sports day, with children participating in activities at home and uploading their scores so they could be added together and the winning house announced. A virtual talent show had many entries and a wide range of talents were celebrated from beat boxing to drumming, magic tricks to gymnastics. We have a great number of very talented children at Longnor School.

The School Circle ran the home section of the Summer Fair as virtual competitions. There were competitions for children of all ages and adults as well. Numerous entries were received demonstrating the wonderful talents we have here.

Plans are well under way for the full reopening of school in September and we look forward to getting everyone together again.

The website www.longnorschool.org.uk is continually updated and tells you about all the exciting and inspiring things we get up to at Longnor C.E. Primary School. To contact the school please email admin@longnorschool.co.uk or phone Rachel Reynolds or Louise Childs on 01743 718493.

SAMUEL LEE 1783-1852

Another fascinating glimpse into the life of a local character from bygone times from the pen of Ron Repath.

Samuel, the son of a carpenter, was born in Longnor and was the youngest of 11 children. He was lucky to get an elementary education at the local Charity School which he attended between the age of 3 and 12. His half-brother, a carpenter in St John's Hill in Shrewsbury, then took him on as an apprentice. Samuel loved reading the books he came across at his lodgings and once was so absorbed reading during a work break that he did not notice the waters of the Severn rising around him.

One day while working on a chapel in Acton Burnell he came across a book in Latin and became fascinated by the language. At the age of 17 he bought a Latin Grammar from a second hand stall, having learnt it he sold the book and bought another and so on till he had learnt the language. This was despite working full time for just 6 shillings a week. Having finished his apprenticeship

he learned Greek and Hebrew in the same way, now being able to afford more books as his wages grew to around a pound a week. Fond of music he had also learned to play the flute and horn.

Samuel suffered from inflammation of the eyes due to reading at night by the light of his fire and sought help from Dr Thomas Dugard. The doctor was amazed to learn that a humble carpenter should be reading at night and even more that he had progressed so well in his language studies. At 25 Samuel could see no benefit in proceeding further in his studies and sold all his books as he married a dressmaker from Newark. Soon after, his livelihood was jeopardized by the loss of his tools (worth £25) in a fire. Somehow Dr Dugard heard of his plight and discussed the situation with his friend Archdeacon Joseph Corbett Vicar of Longnor.

Archdeacon Corbett managed to get Samuel a teaching post at Bowdler's School in Shrewsbury. He also introduced him to Jonathan Scott who,

after a career in India, had taught oriental languages at a college in London run by the East India Company before retiring to Shrewsbury. Scott lent Samuel books and helped him with pronunciation, and with his help Samuel added Arabic, Persian and Hindustani to his store of languages. Scott noted that Samuel was also proficient in French, German and Italian.

Archdeacon Corbett was a great supporter of both the Church Missionary Society and the Bible Society and it was presumably by his recommendation that the Missionary Society appointed Samuel as their teacher of oriental languages and also agreed to sponsor his further studies. In January 1814 already aged over 30 and with £5 in his pocket from the Archdeacon, Samuel set off to enter Queen's College Cambridge.

I will continue the account of Samuel's life in the next edition.

Ron Repath

WE DON'T BUY CRIME

By now, you should have received the Smartwater kit you requested to help protect your belongings from burglary or theft, which has been funded through the Parish Council – Lightsource Community Benefit Fund and in association with West Mercia Police. We do encourage you to dot all your possessions with the forensic pen and most importantly display the large square stickers in a prominent window at the front and rear of your property. The sticker alone can act as a massive deterrent....

The 'We Don't Buy Crime Team' at West Mercia Police has provided us with some free signage to go up on the roads entering our Parish area. The signs warn any criminal element that we are now a fully SmartWater protected area and help to deter them from targeting homes in our Parish.

Thank you for supporting us in these efforts. If you have any queries regarding your kit, please contact your local Councillor or you can contact the Parish Clerk: clerk@actonburnellparishcouncil.org.uk. Due to the lockdown, a few kits have not yet been distributed – please contact your local councillor or the Parish Clerk to make arrangements for them to be delivered. There are also a few spare kits available if you did not originally sign up for the scheme, but would now like to take part.

What's that bug: Lesser Stag Beetle

Lesser Stag Beetles, *Dorcus parallelipipedus* (Linnaeus, 1758), are holometabolous saproxylic insects (Coleoptera, Lucanidae). They go through complete metamorphosis, where the juvenile stages (larvae) look very different from the adult stage (imago).

Where can they be found?

They are widely spread in Europe and Asia, and in England they can be quite common up to the county of Nottinghamshire. *Dorcus parallelipipedus* can be found in woodlands, parks and gardens and large aggregations have been reported from urban areas. However, like other saproxylic organisms, they have suffered a decline due to the clearing of decaying wood. They rely on decaying wood to lay their eggs and for larvae development. The adults are most active from April to September, but they can be found all year round tucked away under bark and logs. They can live for three years, which is uncommon for adult insects.

What is their breeding behaviour?

There is still much to be known about their life cycle because they seek refuge to minimal signs of disturbance, making them difficult to observe. The female *D. parallelipipedus* will use its mandibles to dig a depression on decaying wood and lay an egg (oviposit) in each pit. The larvae live in tunnels, dug by them, inside the decaying wood, where they will overwinter and pupate after having passed three different development stages.

What do they eat?

Dorcus parallelipipedus adults enjoy sugary drinks, running wood sap and juice from ripe fruit will be a nice treat for them. The females will feed on dead insects too. This feeding behaviour is likely associated with egg production as they require greater protein uptake than the males. The larvae will feed on decaying wood and on the fungi associated with it.

Ana Natalio and Nick Antill





THINGS TO BE DOING IN YOUR GARDEN RIGHT NOW (EVEN IF YOU'RE NOT A GARDENER)

With warmer days and evenings, you may be lucky enough to spot a hedgehog in your garden. During the summer months, a female hedgehog may venture out in the afternoons to forage for nesting material and extra food for her young. She should appear bright, active and lively. However, if you find a hedgehog out in daylight which seems sluggish and lethargic, it might be unwell. The hedgehog charity, **St Tiggywinkles**, has a helpline you can call for advice on **01844 292292**, or you can contact the local hedgehog rescue centre, the wonderfully named '**Pricklebums**' in Ludlow, on **01584 878701** or **07399 345786**. **Cuan Wildlife Rescue** in Much Wenlock can also help with telephone advice and care for sick or injured hedgehogs (and other wildlife!). They can be contacted on **01952 728070**.

To help care for the local hedgehog population you can:

- Install a hedgehog house in a quiet corner of your garden
- Make sure fresh drinking water is always available (this will be appreciated in hot, dry weather by all kinds of wildlife visitors!)
- Offer food if you have a hedgehog visiting your garden regularly – dog or cat food is ideal, but please don't offer milk, bread or mealworms
- Most importantly, provide 'hedgehog highways' so that hedgehogs can get into and out of your garden easily – a small gap left at the bottom of a fence or in netting allows them to travel from garden to garden.

Your garden may also be home to a number of nesting birds. While we think of springtime as the peak time for

nest building, many birds may rear a second or even a third brood of chicks into August. Check carefully before you cut back any hedges or shrubs, in case there are blackbirds or thrushes in residence.

House martins are a common sight around our villages, and you may have a nest or two under your eaves. You might like to leave a dish of mud in the garden so that martins can carry out running repairs on their nests while they rear a late brood.

Also think about leaving a few seedheads on plants to provide food for seed eating birds (such as goldfinches). Leaving spent roses on rose bushes and climbers will allow rosehips to form now, which will be welcomed by hungry birds later in the year.

Seedheads can also provide you with seeds to sow this autumn or next spring. Collect seedheads from plants such as poppies, aquilegia or sunflowers, and allow to dry on a greenhouse bench or warm windowsill. Once dry, store in a paper bag or envelope, and keep somewhere dry until the spring. Remember to label your seeds to avoid a surprise.

Some seedheads are explosive, and designed to spread the seeds over a wide area. Plants that use this method of self-seeding include lupins, sweet peas and hardy geraniums. To collect these seeds, tie a paper bag over the seedhead and give the plant stem a gentle shake – if the seeds are ripe this will be enough to trigger an explosion! Package up and save for the spring.

Chris Harrison

BAT WATCH

The Bat Conservation Trust is looking for volunteers to help with their National Bat Monitoring Programme.

Bat numbers in the UK have declined dramatically over the last century. You can help to monitor the UK's bats by taking part in a survey and observing these fascinating mammals in your local area. Monitoring bats helps to uncover the factors that are important for their survival. The programme is vital to provide the information needed to help bat conservation.

Anyone can join in, from beginners to experts, and there is a range of different surveys you can sign up for, including

a sunset/sunrise survey, roost count, field and woodland surveys and even a study on bats in churches. You don't need to be able to identify different kinds of bats, or need any specialist equipment.

Go to www.bats.org.uk/our-work/national-bat-monitoring-programme/surveys for more information and to sign up to take part in one of the surveys. Many of the surveys need to take place in August or September, so sign up now if you are interested.

**Are you experiencing financial
difficulty related to COVID-19?
Worried about keeping your home?
Please call the Council's Welfare
Support Team on 0345 678 9078**

**The Welfare Support Team can provide you
with help, support, advice and signposting.**

USEFUL LINKS

General information about Coronavirus

www.shropshire.gov.uk/coronavirus

Information for businesses and the self-employed

[www.shropshire.gov.uk/coronavirus/
information-for-businesses-and-the-self-employed](http://www.shropshire.gov.uk/coronavirus/information-for-businesses-and-the-self-employed)

Information on rights and benefits

[www.shropshire.gov.uk/coronavirus/
information-for-the-public/your-rights-and-benefits](http://www.shropshire.gov.uk/coronavirus/information-for-the-public/your-rights-and-benefits)

Information on Housing Benefit and Council Tax Support

www.shropshire.gov.uk/benefits

Universal Credit

[www.shropshire.gov.uk/benefits/
what-could-affect-my-benefits/universal-credit](http://www.shropshire.gov.uk/benefits/what-could-affect-my-benefits/universal-credit)

Online benefit calculator

www.shropshireboc.entitledto.co.uk/home/start

Furniture and electrical goods

Reviive 01743 588458 South Shropshire Furniture Scheme 01584 877788

Citizens Advice Shropshire

03444 99 11 00 www.cabshropshire.org.uk

